







**A more intimate and new way to open well-proportioned visual horizons both in the living and hospitality areas of the houses.**

The timeless elegance of the **BOTERO** sofa recalls classicism with its linear shape that ends in soft curves that seem sculpted by the erosion of the winds. Extraordinarily simple with a design conceived to characterize any environment: it impresses with its large-scale dimensions and offers an unprecedented experience of well-being thanks to a set of natural materials.

The modularity of BOTERO allows linear or curvilinear compositions of different sizes and shapes. The deeper elements, the swivel armchairs, as well as the poufs, complete the customization by offering a freer use of the sofa. The designer has created a modular sofa with organic and curved lines, providing a feeling of comfortable protection while preserving a modern and sophisticated look.

**BOTERO** Sofa “New collection 2022” designed by Massimiliano Raggi  
*The BOTERO seating system can satisfy every design need.*





*BOTERO curvilinear sofa composition, PICK coffee tables, GEMMA chandeliers and AMARETTO floor lamp, "New collection 2022" designed by Massimiliano Raggi*





*Lighting system with elements from the GEMMA series, designed by Massimiliano Raggi*











*BOTERO sofa, RAY coffee tables and wall made with ONIGEM VETRITE slabs in 14 colors*













AMARETTO wall and floor lamps, designed by Massimiliano Raggi





**BOTERO** Sofa “New collection 2022” designed by Massimiliano Raggi



*Botero Sofa BO.01 3 Seater*



*Botero Sofa BO.02 4 Seater*



*Botero Sofa BO.A01 Corner Unit*



*Botero Sofa BO.T01 DX-SX Side Element*



*Botero Sofa BO.A03 Corner Unit*



*Botero Sofa BO.C01 Middle Unit*



*Botero Sofa BO.C02 Ottoman Unit*



*Botero Sofa BO.C03 Middle Unit*



*Botero Sofa BO.C04 Middle Unit Round*



*Botero Sofa BO.C05 Round Ottoman*



*Botero Sofa BO.P01 Ottoman*



*Botero Sofa BO.T02 DX-SX Side Element Round*



*Botero Sofa BO.T03 DX-SX Side Element Ottoman*



*Botero Sofa armchair AR01*



*Botero Sofa armchair AR01*





**Like an island, with square lines that emerges from the room and determines the horizon of the living space.**

The new **ZENO** system takes shape from a suspended base on which generous and architectural padding rests. The system comes from a geometric vision: a continuous line that lifts it from the ground thanks to a posterior plinth covered in saddle leather or painted, which provides the sofa with a distinct feeling of suspension. The leather profile with highlighted stitching and the brass buckles convey the **SICIS** style.

A platform on which the padded elements are placed – seats, backrests, and armrests – all designed with large cushions with emphasized proportions and a strong personality and which can be integrated into parallel both in the conversation areas and in the areas in front dedicated to the television or the fireplace. It is not only the emphasized dimensions of these modules but also their unprecedented softness and the simple aspect of **ZENO** that allow a sophisticated language declined to infinity, combining modules and elements with a narrative that in its entirety could continue without limits. For some terminal elements, the base that holds the upholstered items is larger than the seat cushion to accommodate side bookcases that serve not only as a support surface but also as a **Wi-Fi** recharge.

Even the tables reflect the same language by presenting ground support in painted metal and details in polished metal. The tops can be in walnut or ash besides the whole **VETRITE** range. The different sizes and heights of the tables allow a play of overlapping that dynamizes the horizontality of the entire family.

**ZENO** Sofa “New collection 2022” designed by Massimiliano Raggi  
*Distinctive elements of the ZENO modular sofa are the container armrests covered in leather.*









SICIS\_24



JUPITER small high



JUPITER side



JUPITER small low













SICIS\_30



SICIS\_31





SICIS\_32

"New collection 2022" designed by Massimiliano Raggi

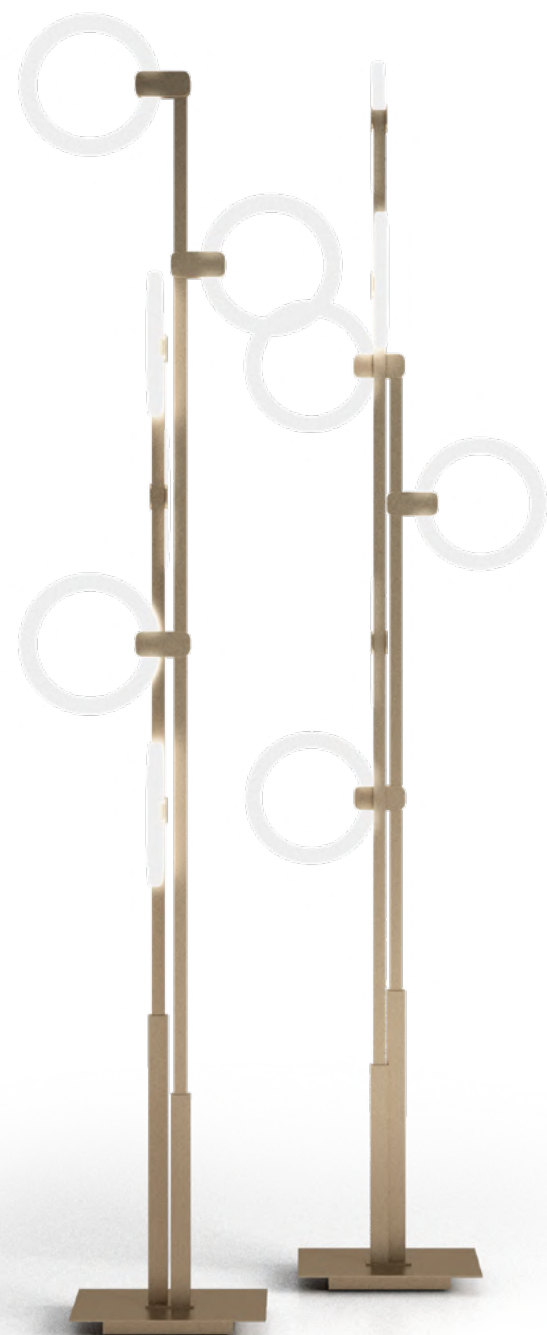


JUPITER coffee



JUPITER double

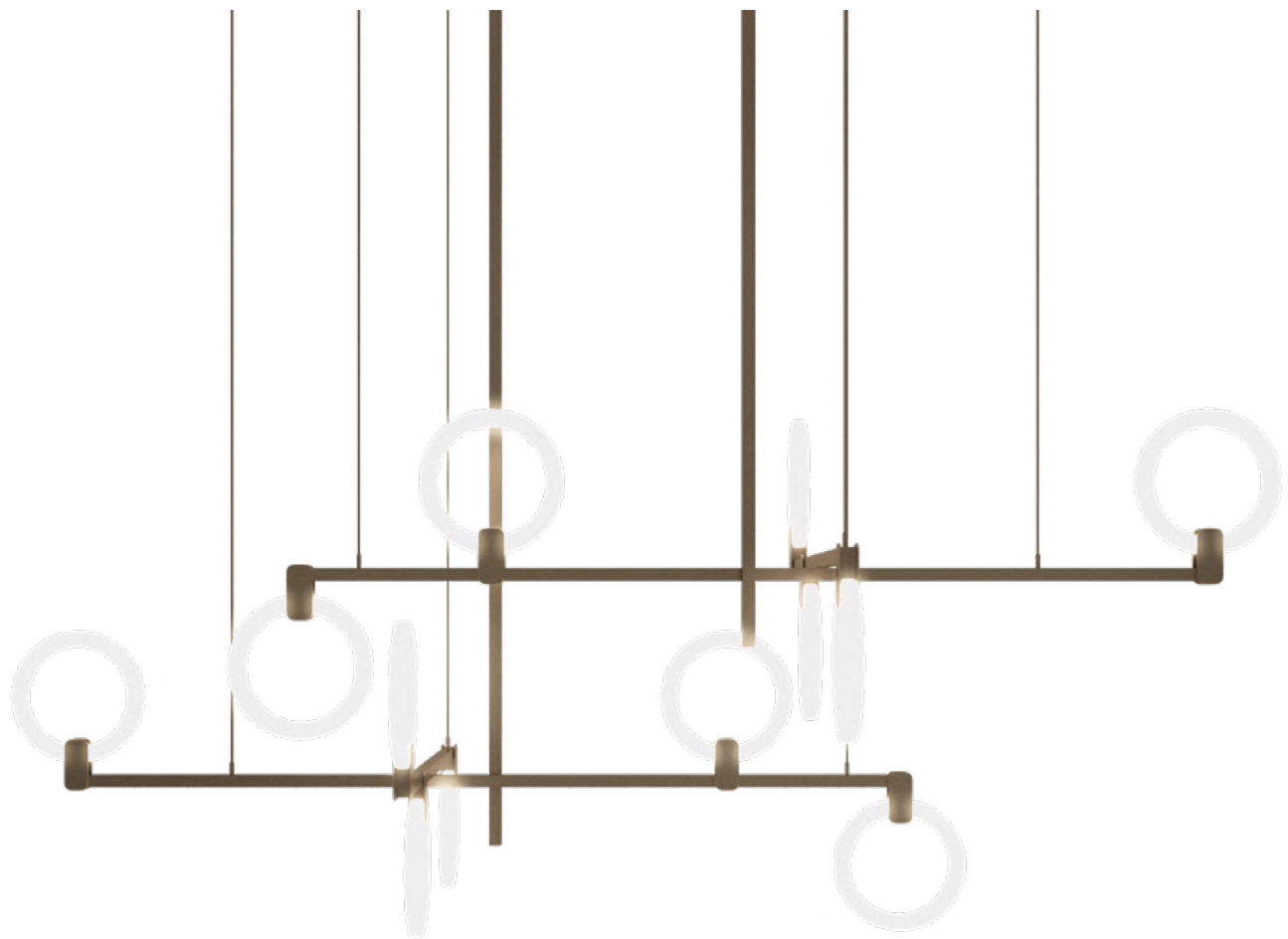




*POLO floor lamp, "New collection 2022" designed by Massimiliano Raggi*







*POLO ceiling lamp, "New collection 2022" designed by Massimiliano Raggi*





**ZENO** Sofa “New collection 2022” designed by Massimiliano Raggi  
*The ZENO modular seating system can meet any design need.*



*Zeno ZE.A02*



*Zeno ZE.C02*



*Zeno ZE.C03*



*Zeno ZE.CL01*



*Zeno ZE.CLB01*



*Zeno ZE.CLL01*



*Zeno ZE.P03*



*Zeno ZE.P04*



*Zeno ZE.P06*



*Zeno ZE.P07*



*Zeno ZE.P08*



*Zeno ZE.PB04*



*Zeno ZE.PB05*



*Zeno ZE.PB06*



*Zeno ZE.PL04*



*Zeno ZE.PL05*



*Zeno ZE.PL06*



*Zeno ZE.T02*



*Zeno ZE.T03*



*Zeno ZE.TL02-DX*

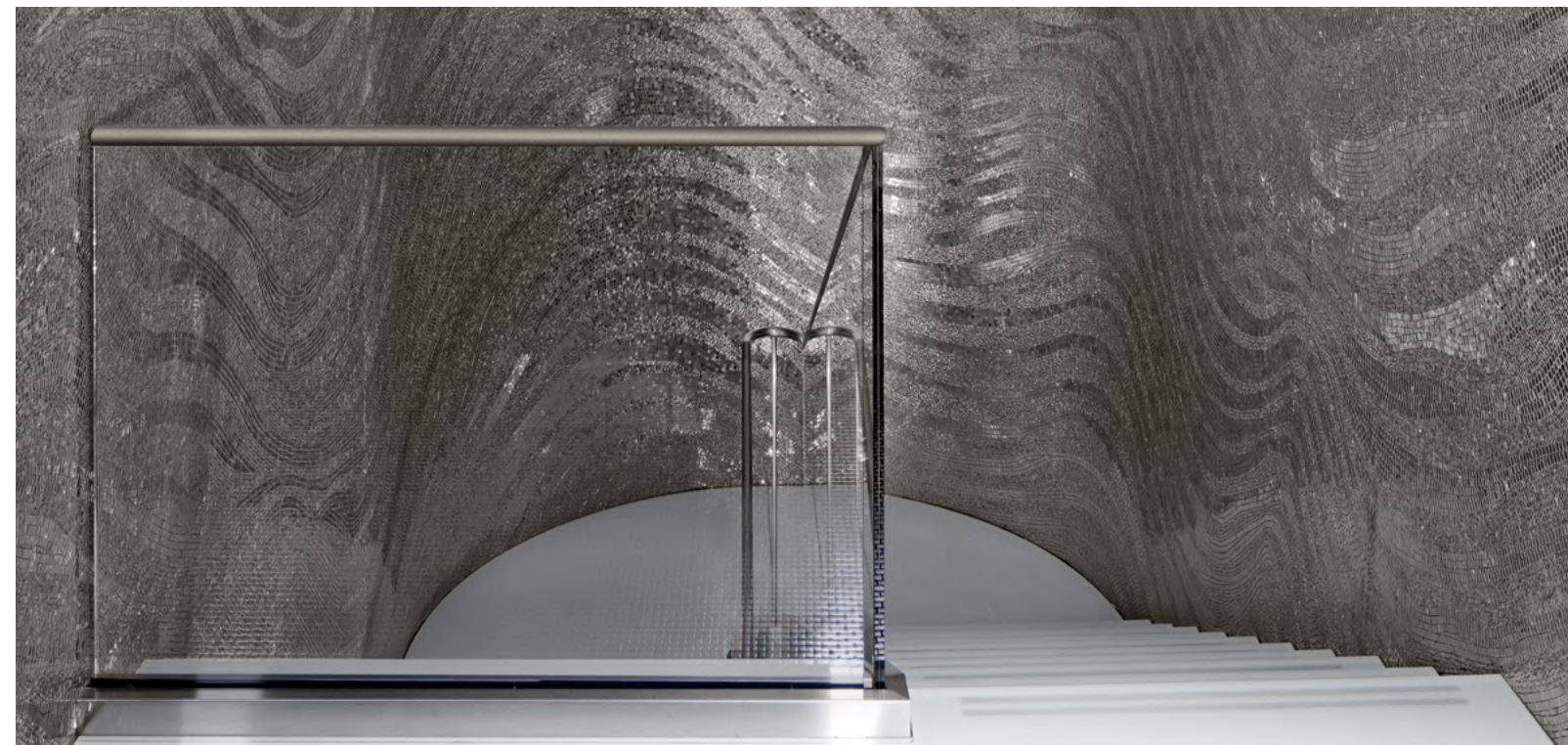


*Zeno ZE.TL03-DX*



*ZENO sofa composition with the possibility of a final bookcase element covered in leather combined with fabrics from the TESSERE collection by SICIS.*







**If the ground floor, visible from the street, is dedicated to modular seating systems, the more reserved first floor is a real exaltation of the SICIS Home world.**

In fact, subsequent to the staircase that connects the two floors, you enter the core of SICIS furniture production, starting from the imposing **PHILIPPE** table with **VETRITE** Gem-Glass backlit glass top combined with the **AMARETTO** chairs with suspension lamps of the homonymous series.

On the opposite side, a delicate bedroom layout awaits us with walls in **VETRITE** Gem-Glass and a backlit boiserie. The room is completed by a functional wardrobe and a romantic bedroom desk.

The **‘MY PRIVATE BOUTIQUE’** system, designed by Marco Piva, offers us infinite modular possibilities to create private rooms where wardrobes, shelves, dressers, or containers allow you to order accessories, clothes, and jewels in which to be admired and chosen.

## Various situations in a contemporary living space

*The Milan showroom is characterized by a wide choice of environments ranging from the bedroom to the living room, passing through the walk-in closets.*

















*TRIS wall sconce, designed by Massimiliano Raggi*



*TRIS table lamp, designed by Massimiliano Raggi*



*BLOSSOM swivel armchairs, designed by Massimiliano Raggi*

*DONOVAN bed, DONOVAN bench and AMIDELE bedside tables, designed by Massimiliano Raggi*





*VALMONT desk and BLOSSOM swivel armchair, designed by Massimiliano Raggi*



*BALLET ceiling lamps designed by Massimiliano Raggi*









SICIS\_ 56



SICIS\_ 57





*ISLAND modular sofa and PEGGY armchairs. At the center, MARS coffee table in curved glass, "New collection 2022" designed by Massimiliano Raggi*





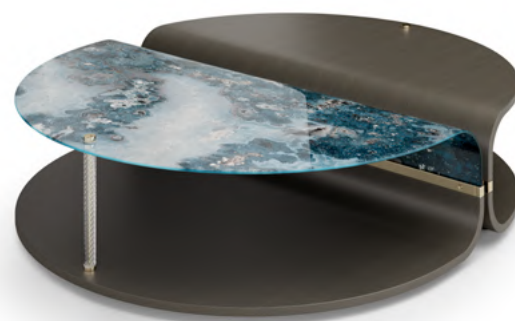




*DROP battery table lamp designed by Massimiliano Raggi*



*GEMMA floor lamps designed by Massimiliano Raggi*

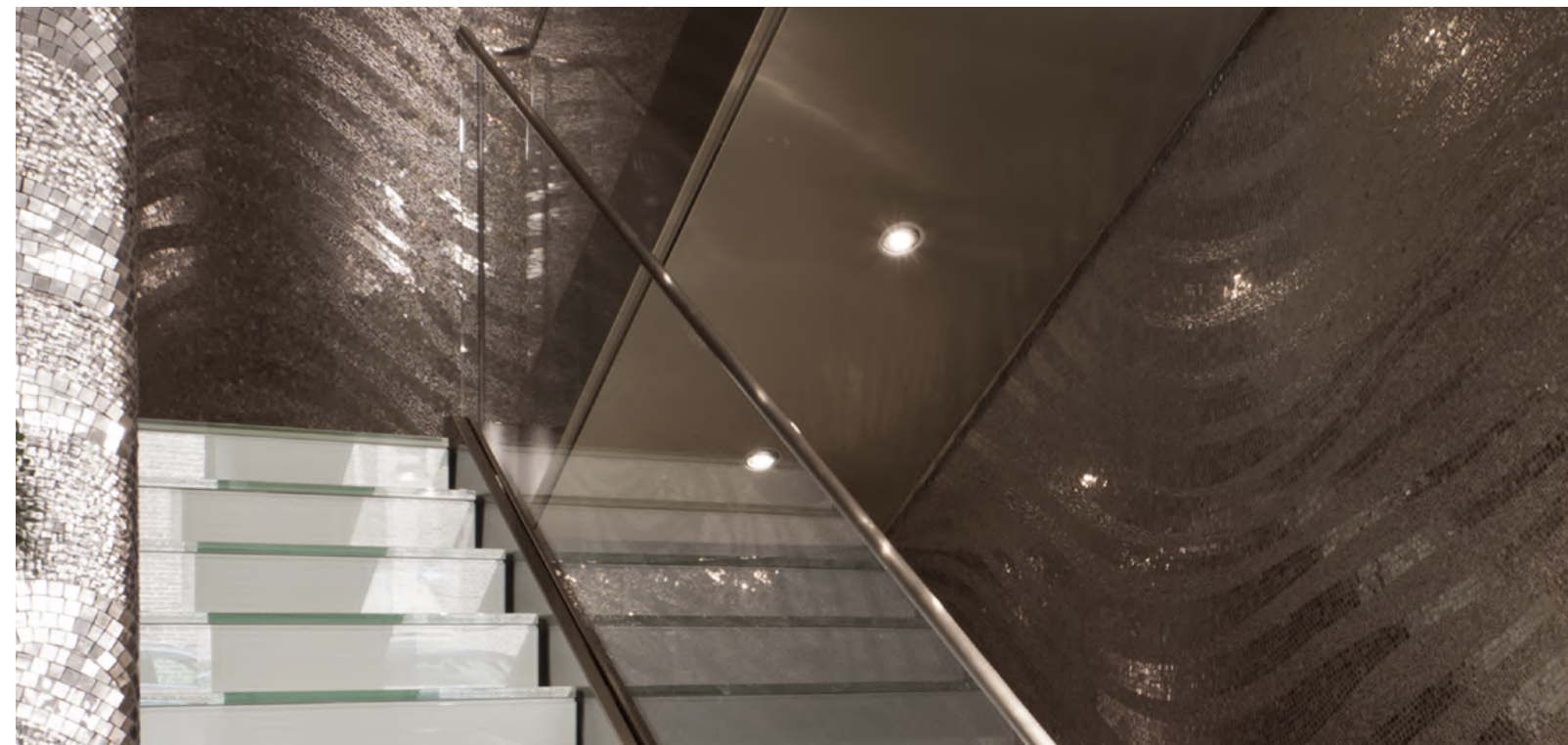


*MARS coffee table designed by Massimiliano Raggi*



*GARRET buffet and mirror in Artistic Mosaic "FLUXUS" designed by Massimiliano Raggi*







**Interior Design Service.**

Since 2004 the Milan showroom office has been offering a complete interior design service for a series of projects: apartments in the most exclusive locations, yachts, exotic villas, and prestigious residential complexes. The studio's activity consists in developing creative solutions, as well as projects that are unique in their aesthetic worth and perfectly integrated in terms of characteristics and values, precisely to connote each project as unique, according to the customer's needs.

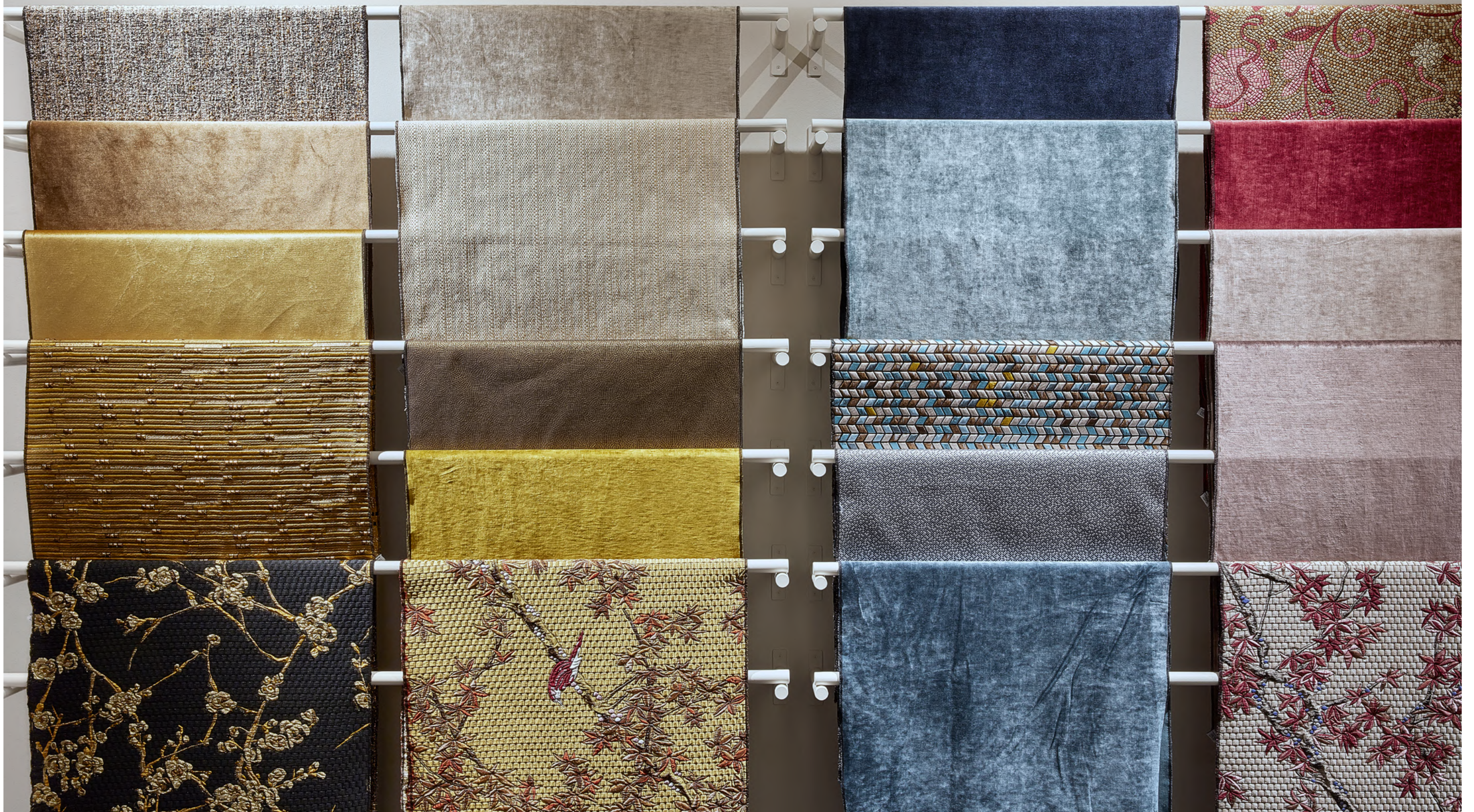
**SICIS** Home defines new living concepts enriching an elegant and contemporary lifestyle in the contract sector too. A working methodology refined over years of experience in the name of the best-made in Italy tradition.

**Design and logistics in the Milan offices**

*A specialized team follows the entire design chain, from the initial idea to logistics, from support services to the brilliant final execution.*















VETRITE  
Gem Glass

VETRITE  
Electric Marble & Spathula

VETRITE  
by SICIS

VETRITE  
by SICIS





[www.sicis.com](http://www.sicis.com) [info@sicis.com](mailto:info@sicis.com)  
SICIS · Head Office · Via Borgonuovo, 29 · 20121 Milano (Italy)  
Sicis s.r.l. Ravenna (Italy) · June 2022

**SICIS ITALY**  
**Showroom Milano**  
20121 · Via Fatebenefratelli, 8  
Ph. +39 02 87 60 99 · Fax +39 02 72 09 68 53

**Showroom & Factory Ravenna (Italy)**  
48123 · Via Canala, 85  
Ph. +39 0544 469 711 · Fax +39 0544 46 98 11

**SICIS FRANCE**  
**Showroom Paris**  
75008 · 41, Rue François 1<sup>er</sup>  
Ph. +33 (0)1 4952 8989 · Fax +33 (0)1 4952 8990

**SICIS SPAIN**  
**Showroom Madrid**  
28006 · 33, calle José Ortega y Gasset  
Ph. +34 91066252

**SICIS UNITED KINGDOM**  
**Showroom & Offices London**  
15A Dover St, Mayfair, W1S 4LR  
Ph. +44 207 491 9849

**SICIS NORTH AMERICA**  
**Corporate Headquarters New York**  
150 Bruckner Blvd Bronx NY 10454  
Ph. +1 212 965 4100 · Fax +1 646 390 4587

**SICIS H.K.LIMITED**  
Room D, 24F, Tai Yau Building  
181 Johnston Road · Wanchai, Hong Kong  
Ph. +(852) 2832 2830 · Fax +(852) 2833 9009

**SICIS DUBAI DESIGN DISTRICT - U.A.E**  
**Showroom & Offices** Bld. 8, 1<sup>st</sup> Floor, Office 108  
Ph. +00 971505270183



SICIS®  
[WWW.SICIS.COM](http://WWW.SICIS.COM)