



# X-House Beijing

SICIS





## X-House · Beijing (China)

FIRM [asap/ adam sokol architecture practice](#)

TYPE Commercial › Showroom  
Residential › Private House

STATUS Built

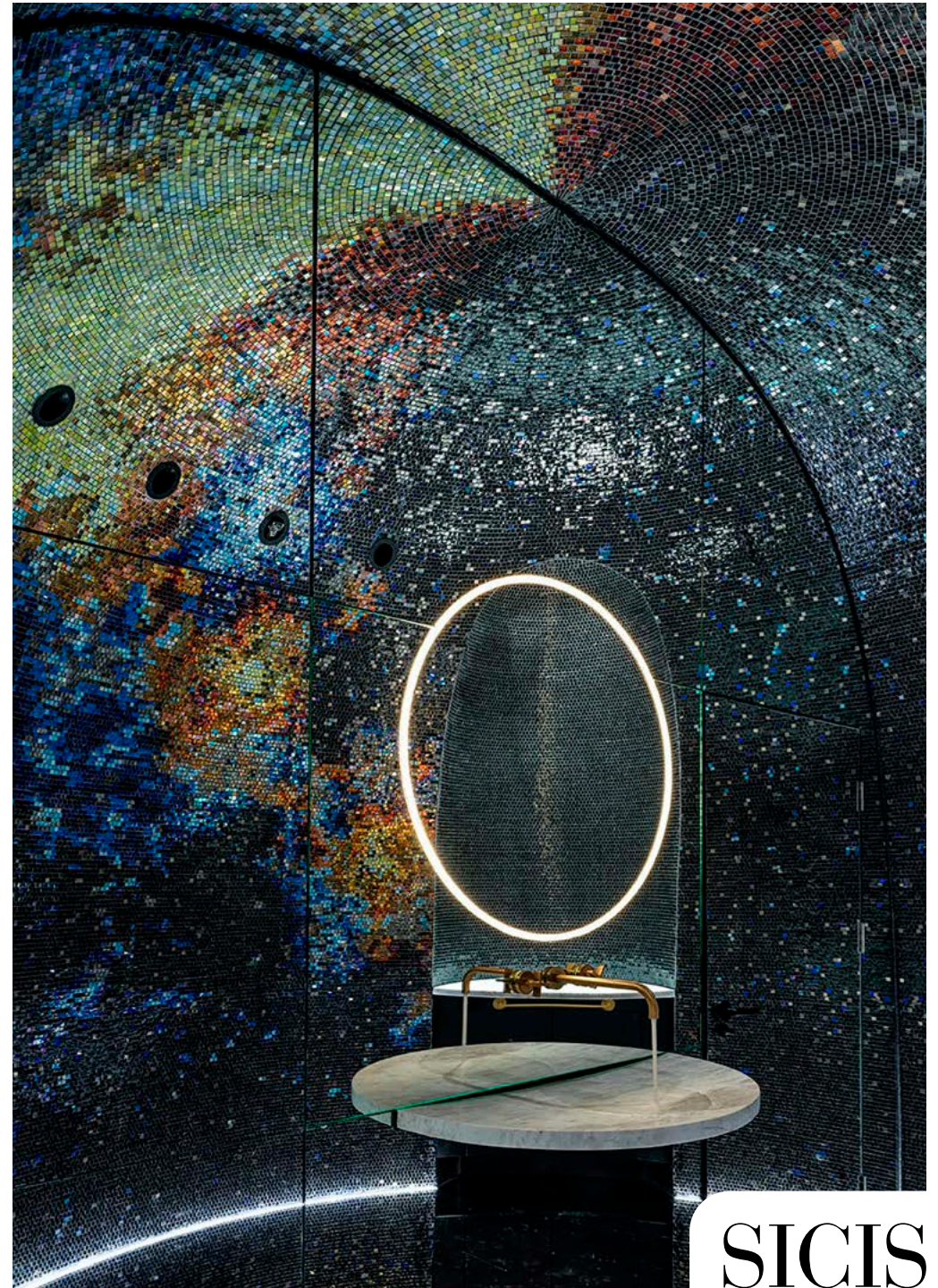
YEAR 2018

SIZE 1000 sqft - 3000 sqft

Situated in Beijing's tallest residential structure, the X-House is a showcase business and residential space for a prominent international entrepreneur. Designed to accommodate business meetings, banquets, guests, and other functions, the space features a 1000-bottle wine cellar, tasting room, and spa bathrooms.

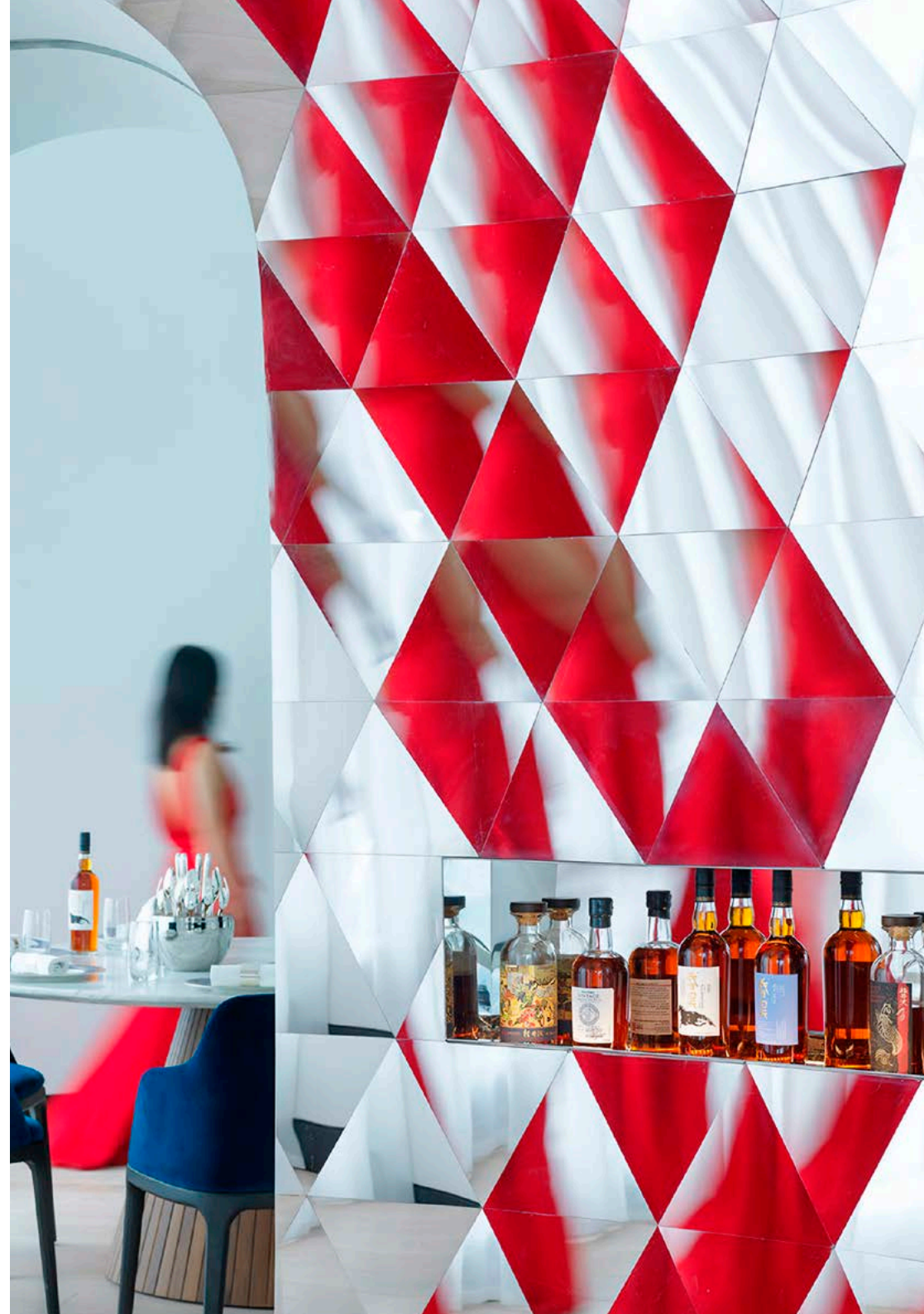
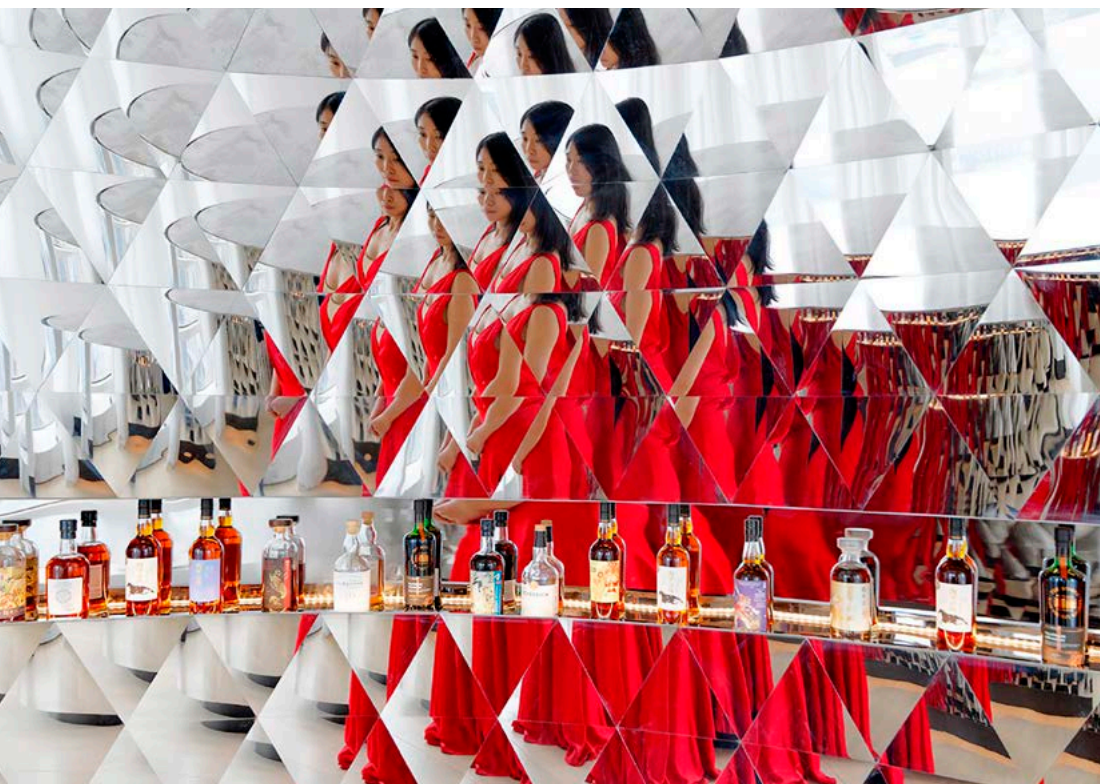
The design is based on a system of Bézier curves, giving each space a unique and distinctive quality, creating a completely unexpected experience high above the streets of Beijing. Collectively, the spaces act as a network of domes, almost like a cave, creating opportunities for views, privacy, exploration and surprise.





SICIS

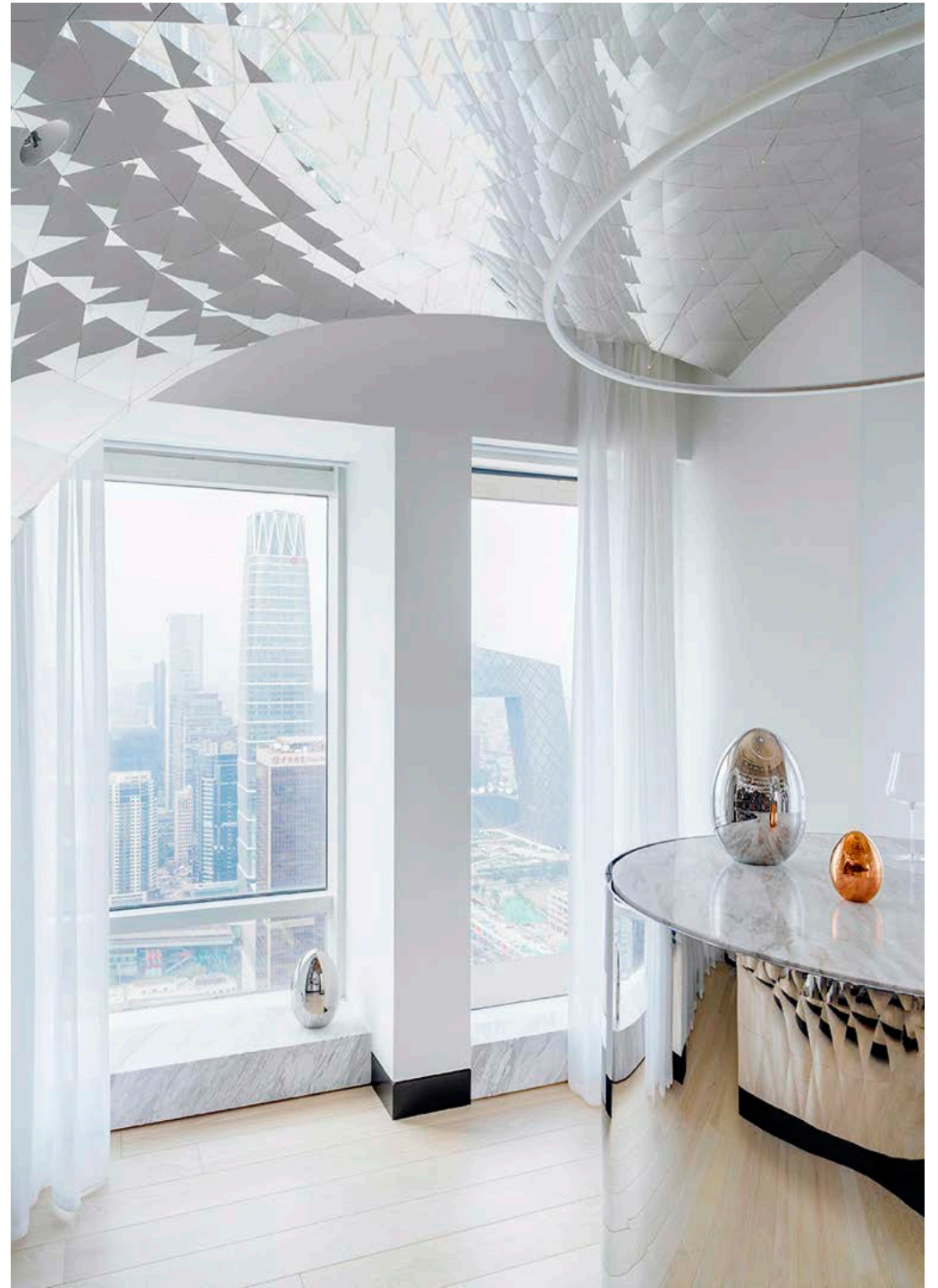
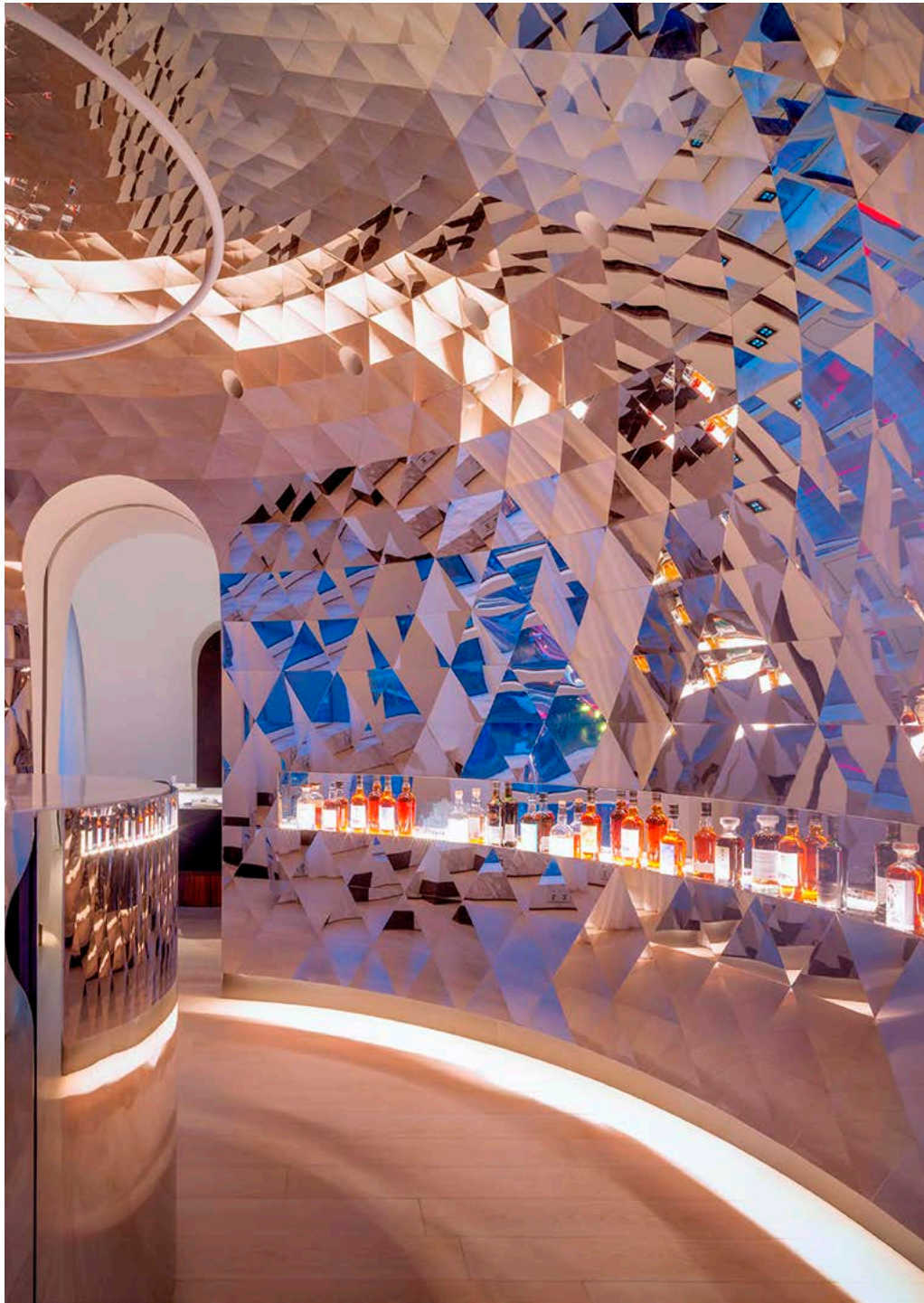




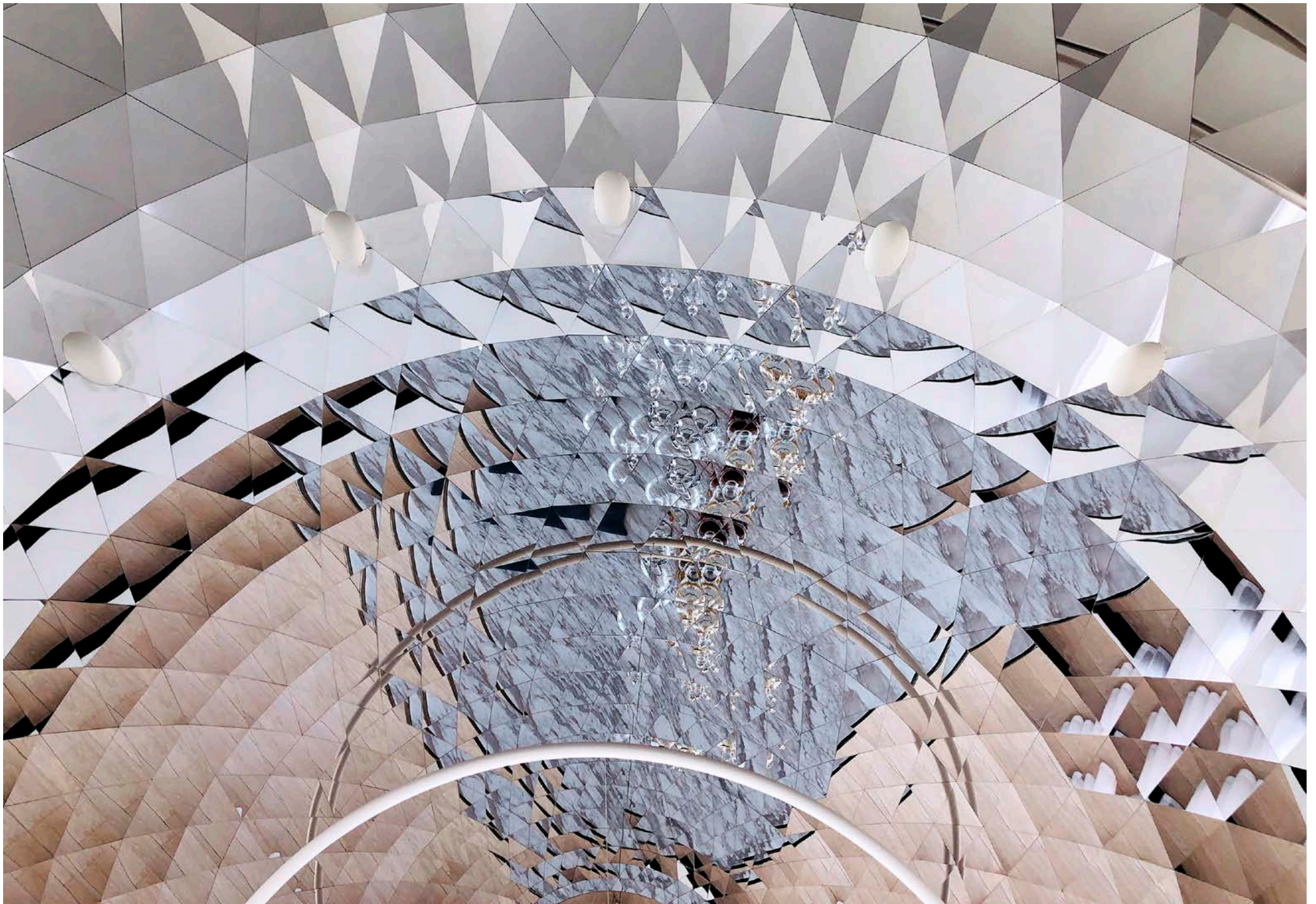
















# SICIS

[www.sicis.com](http://www.sicis.com)