



# Enzo Superyacht 115m

## Lürssen (Germany)

SICIS





SICIS





## ENZO SUPERYACHT

*ENZO is a 115.0 m Motor Yacht, built in Germany by Lürssen.*

*She can accommodate up to 14 guests in 7 staterooms. She has a gross tonnage of 4850.0 GT and a 18.21m beam.*

*The naval architecture was developed by Lürssen, who has architected 64 other Superyachts in the Boat Pro database.*

*She is built with a Teak deck, a Steel hull, and Aluminium superstructure.*

***The luxurios interior is made unique with custom Mosaics, Fabrics and Furniture by SICIS.***



115 METERS

SICIS









Boardroom



SICIS



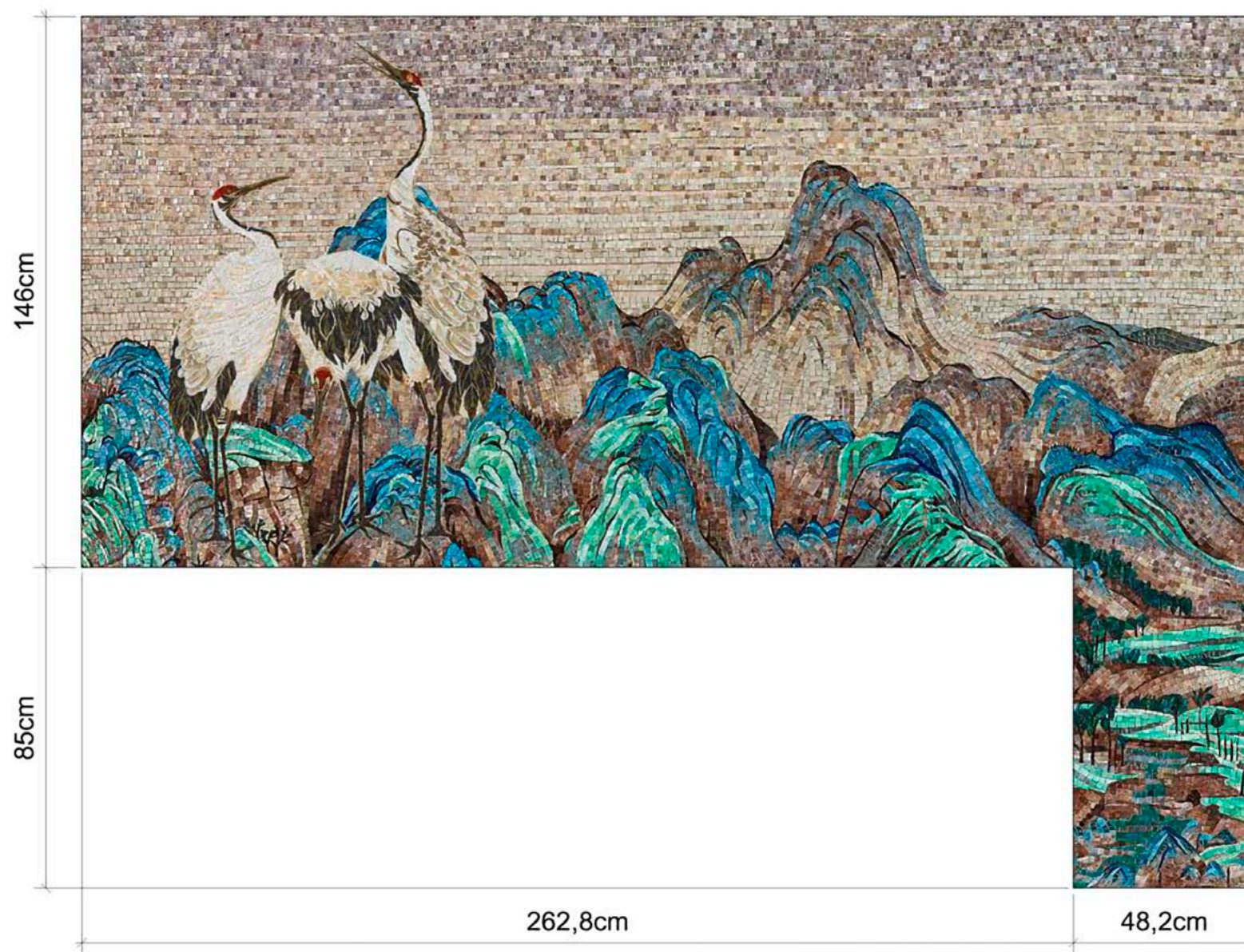


Boardroom

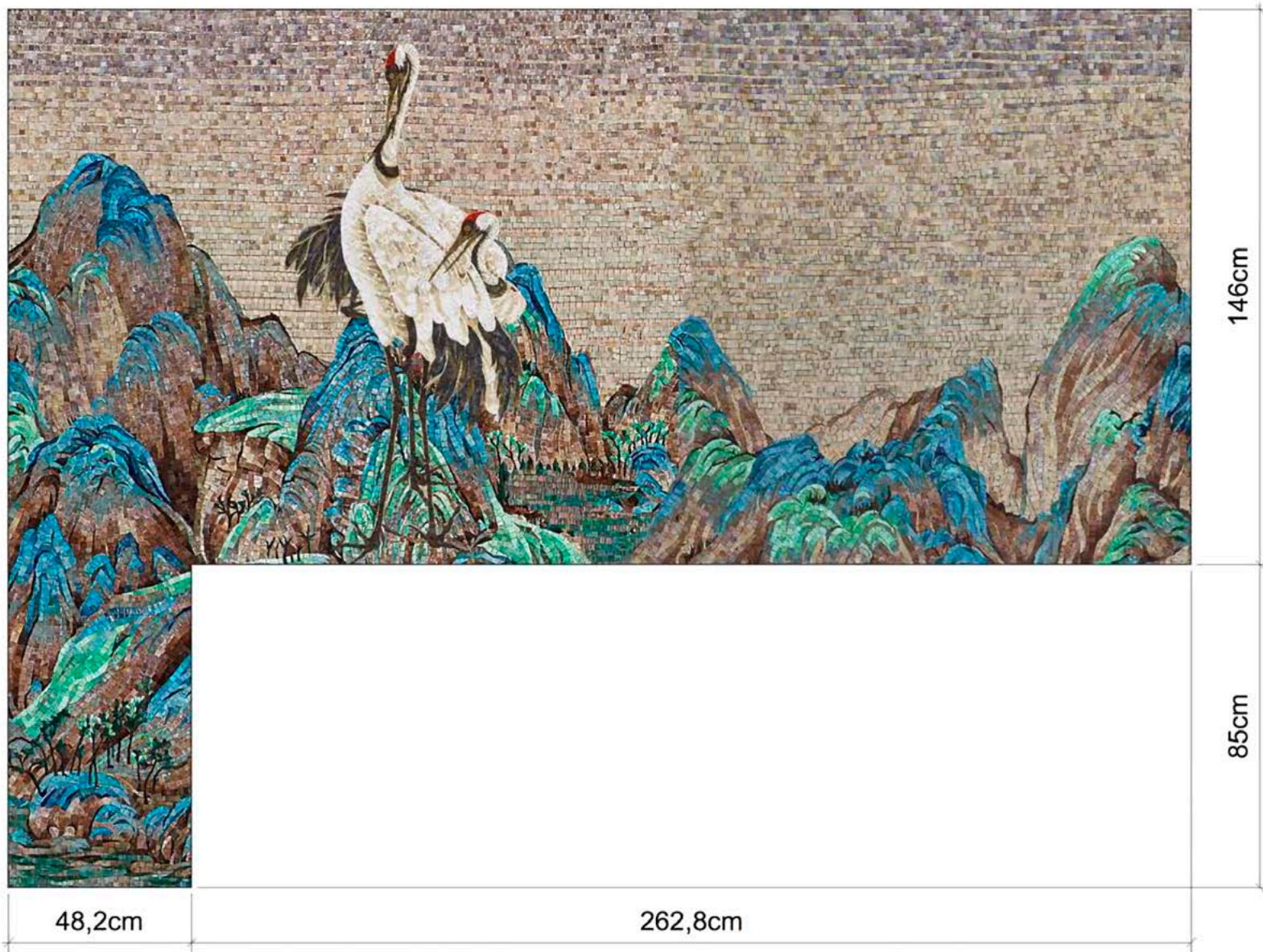


SICIS













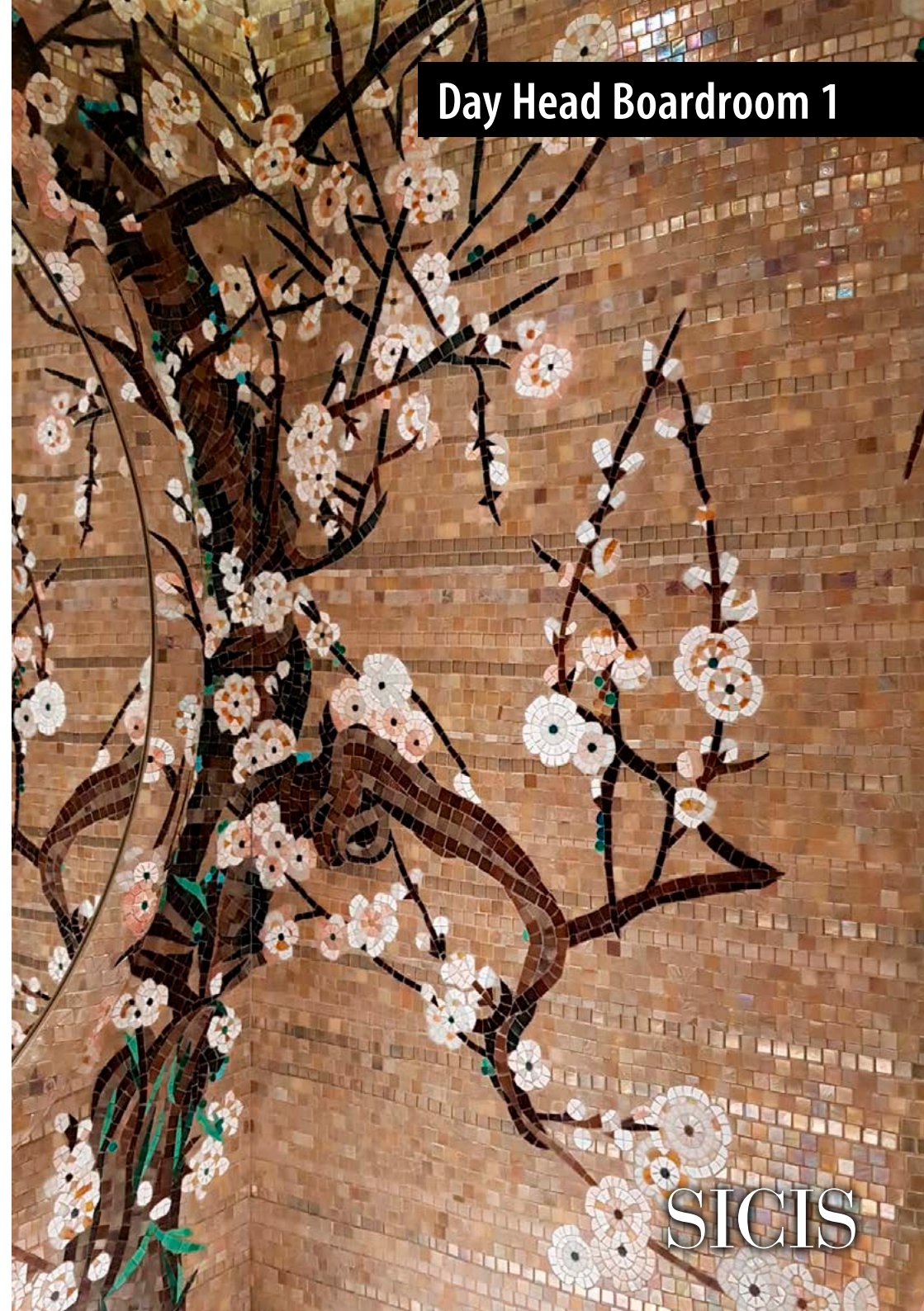
MAKING

SICIS





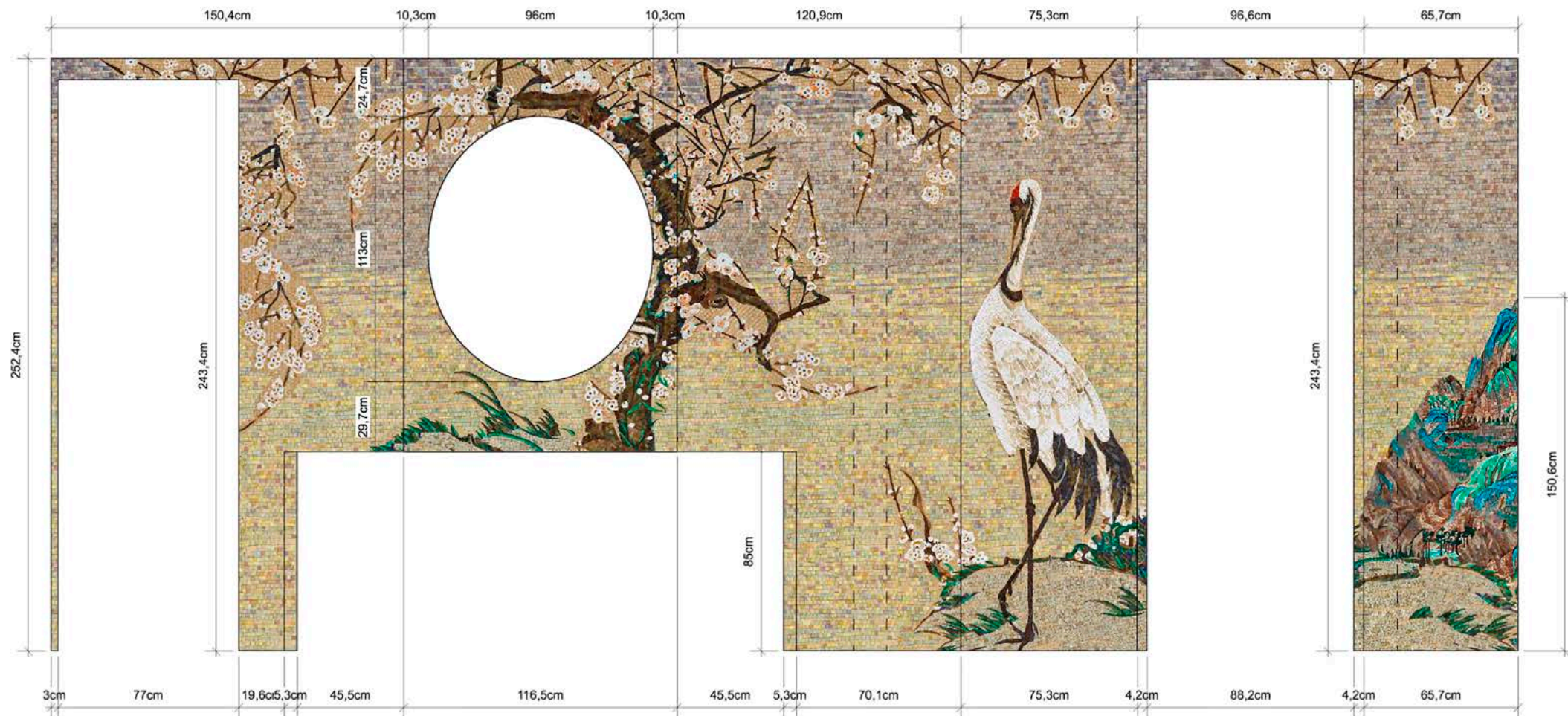




Day Head Boardroom 1

SICIS









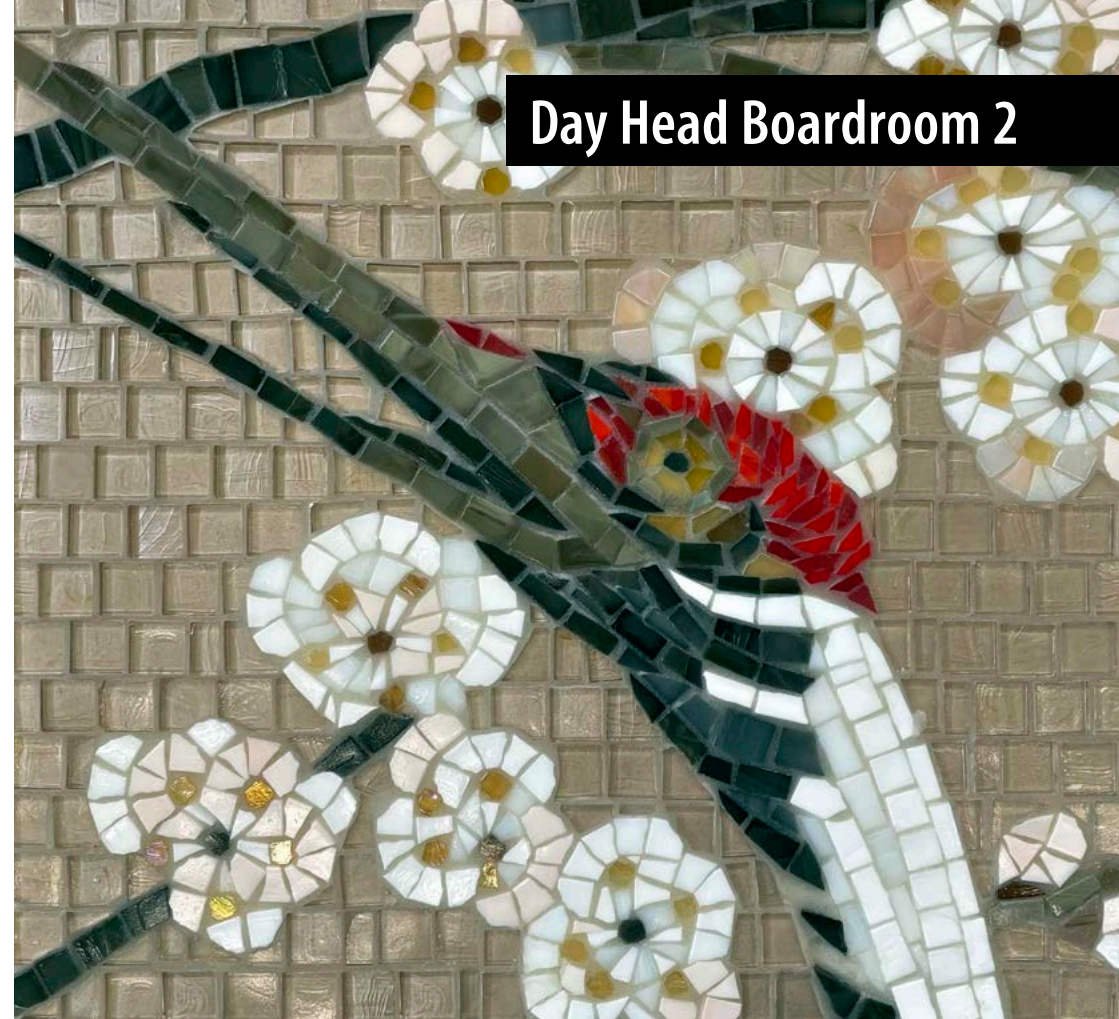
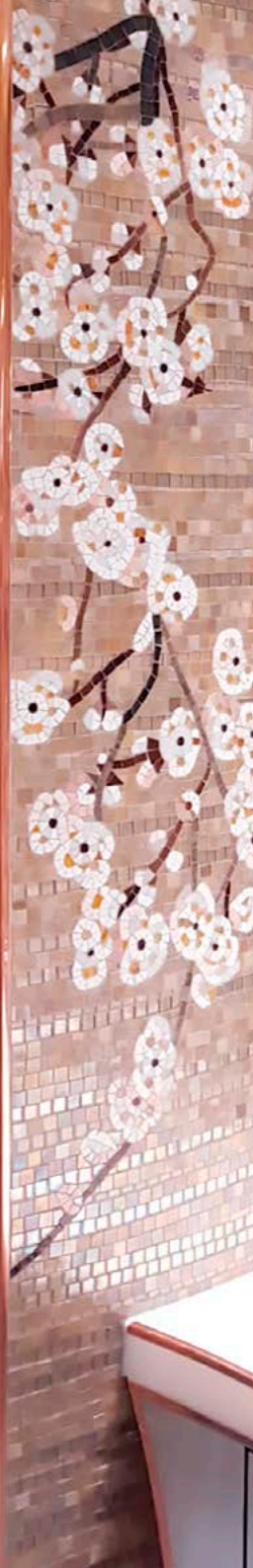
MAKING

urroom zona lavabo rif 2021-1817

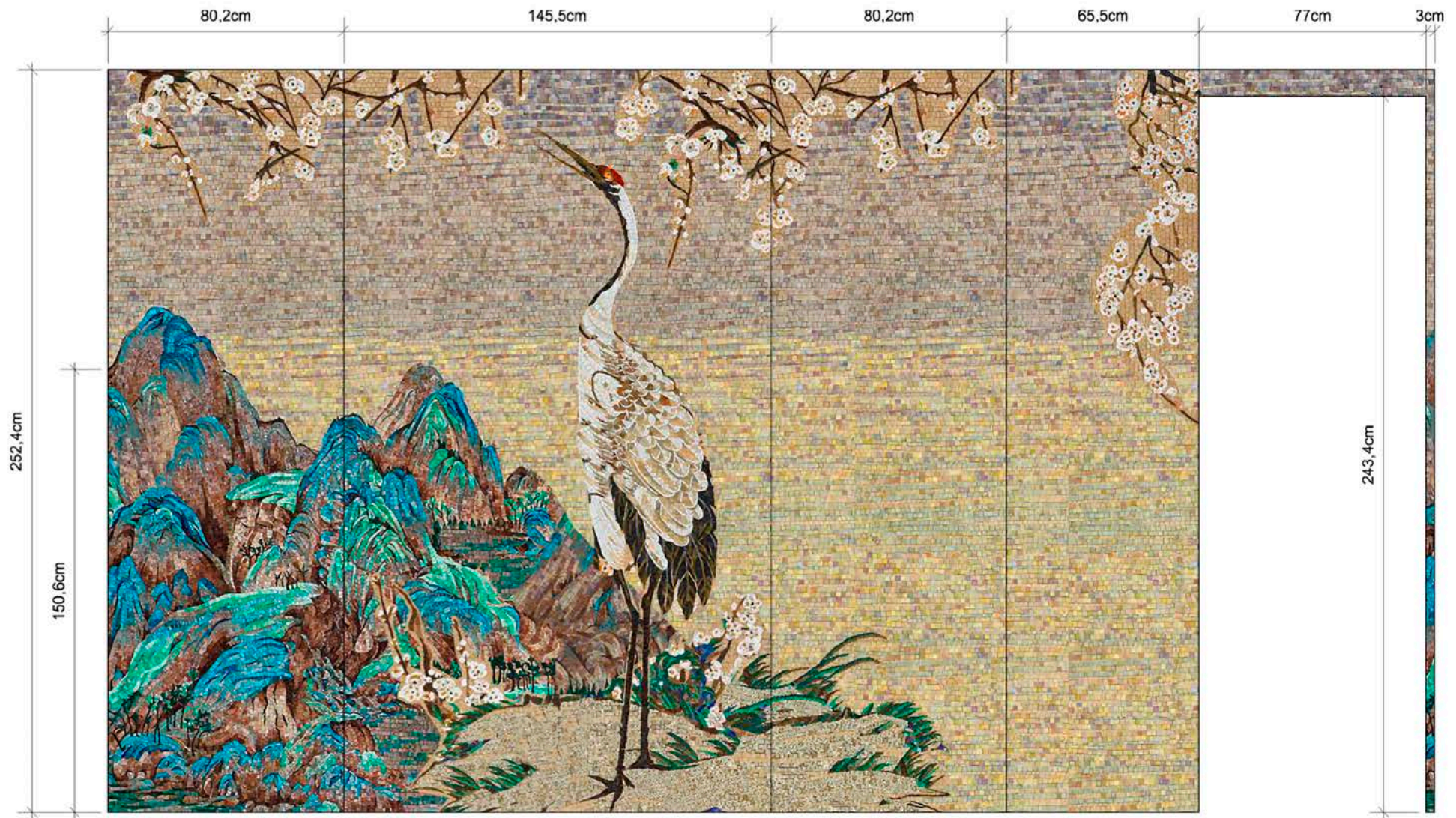
120,9cm

SICIS

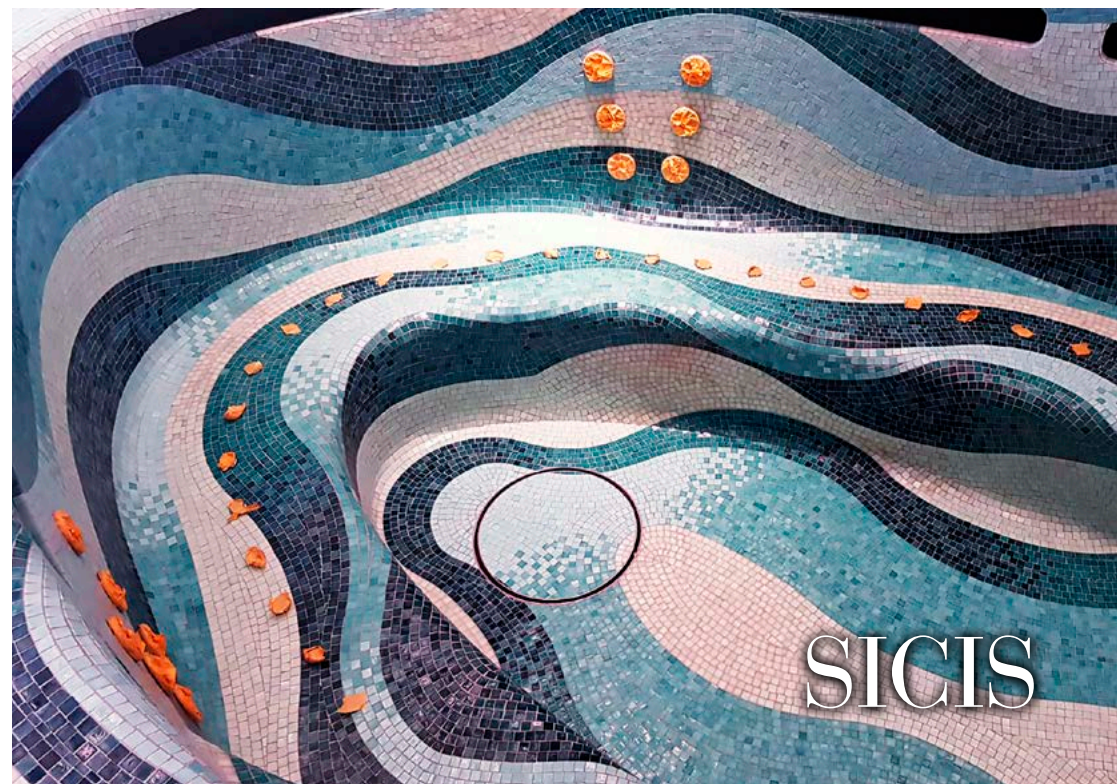




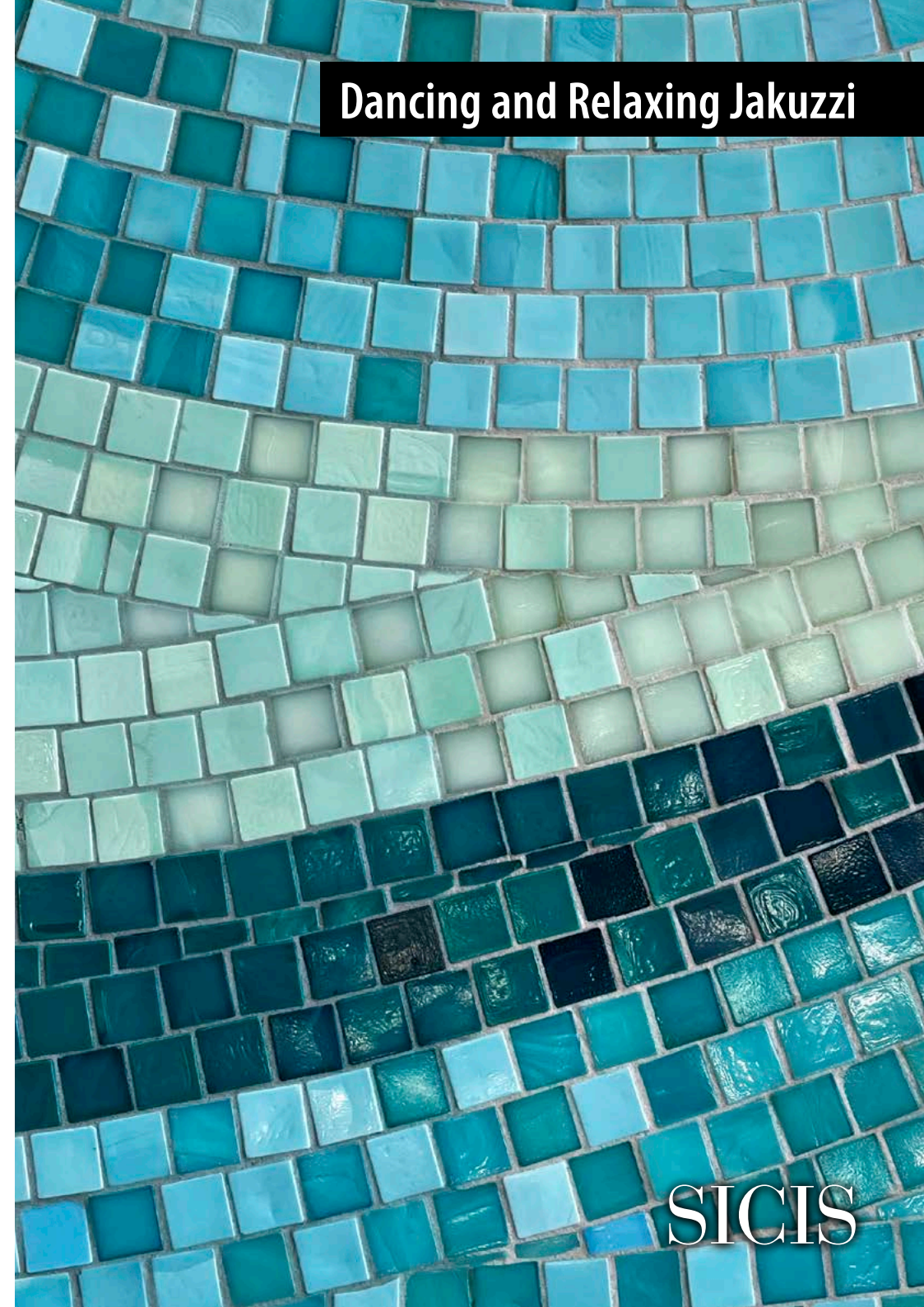










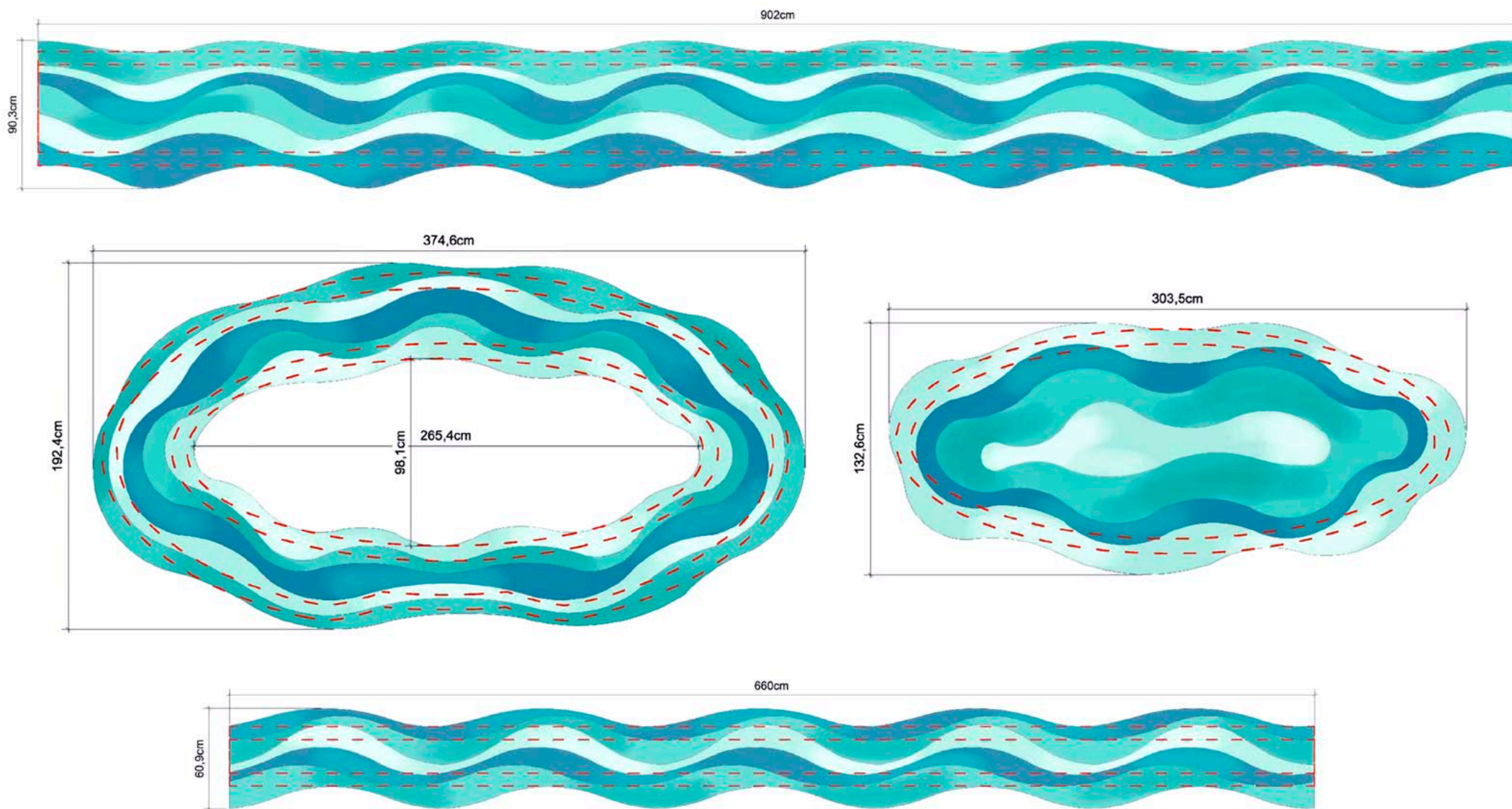


Dancing and Relaxing Jakuzzi

SICIS

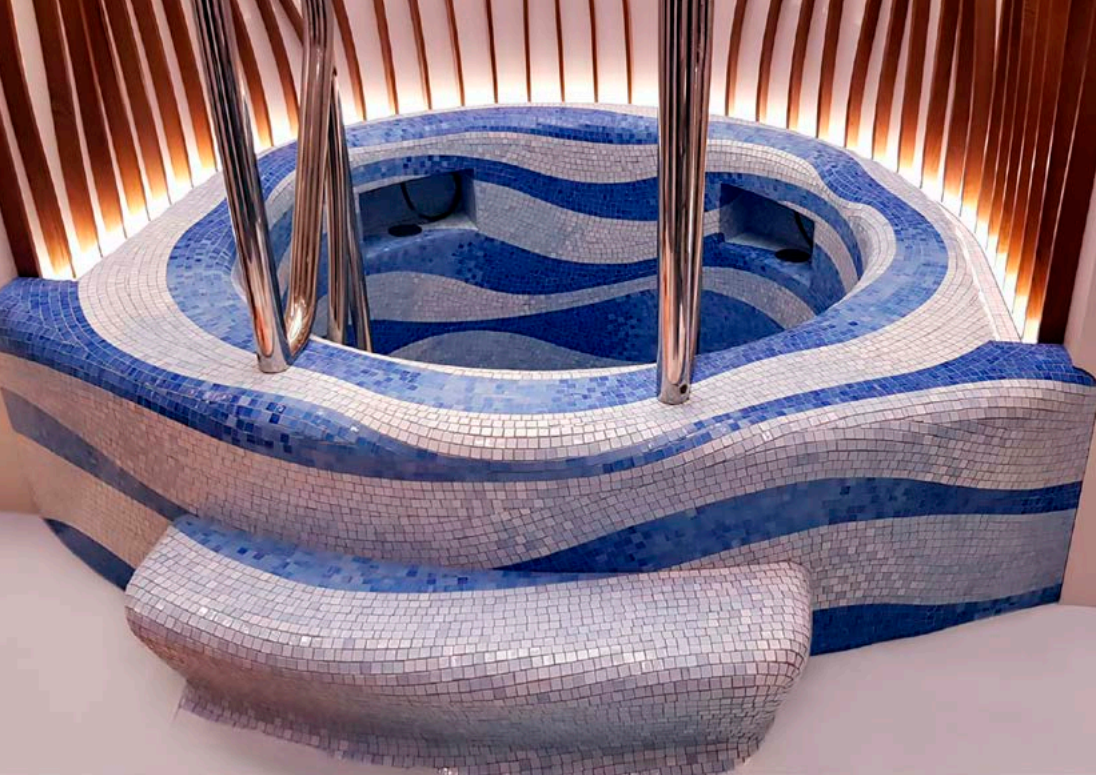


# Dancing and Relaxing Jakuzzi



SICIS

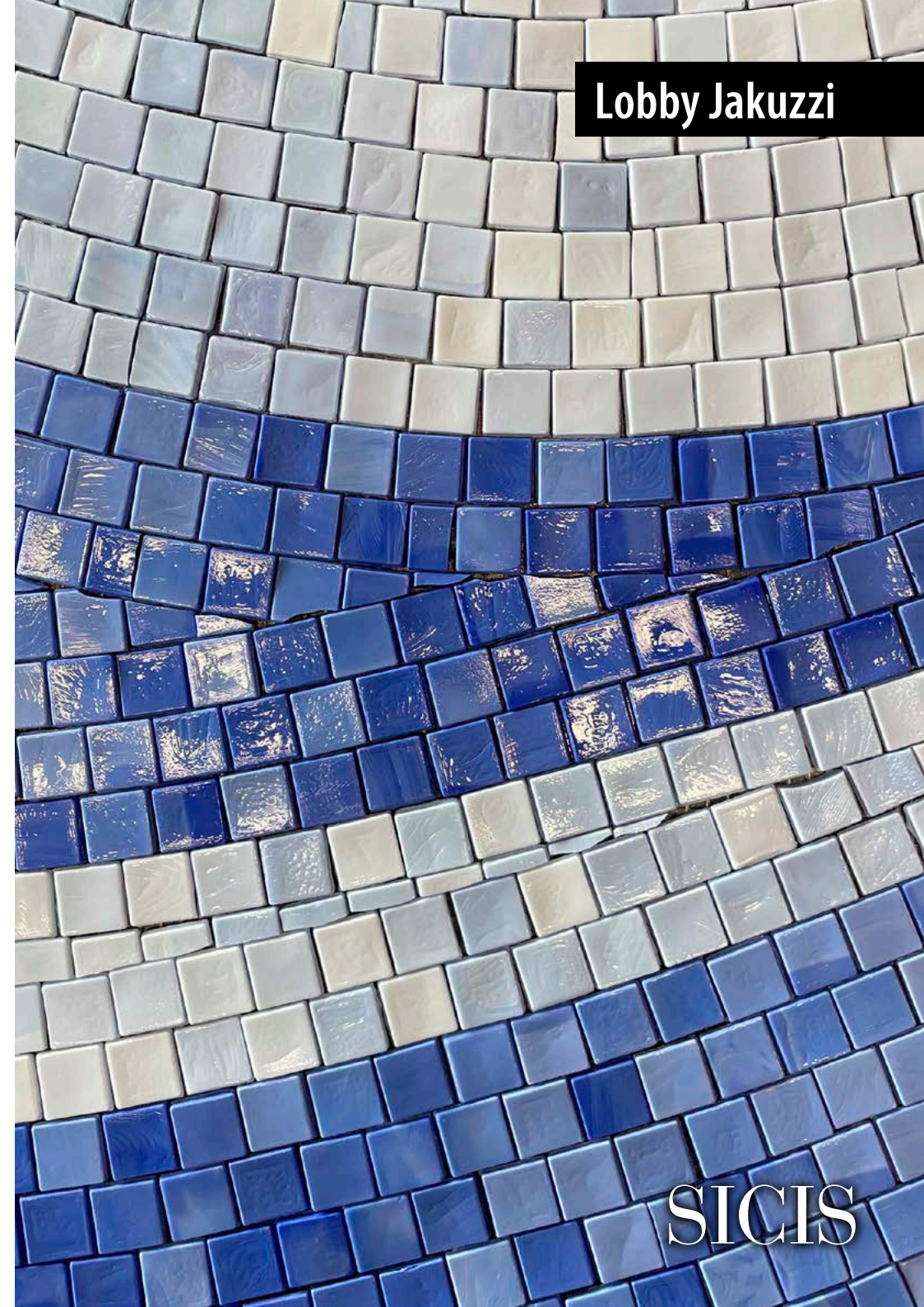






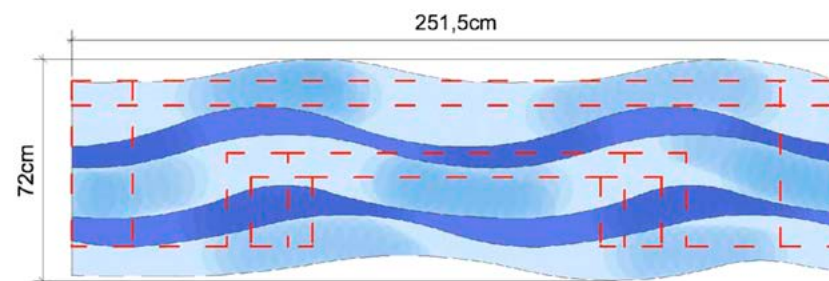
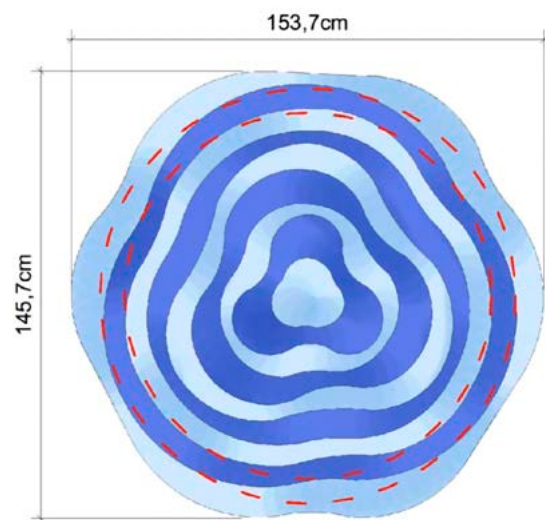
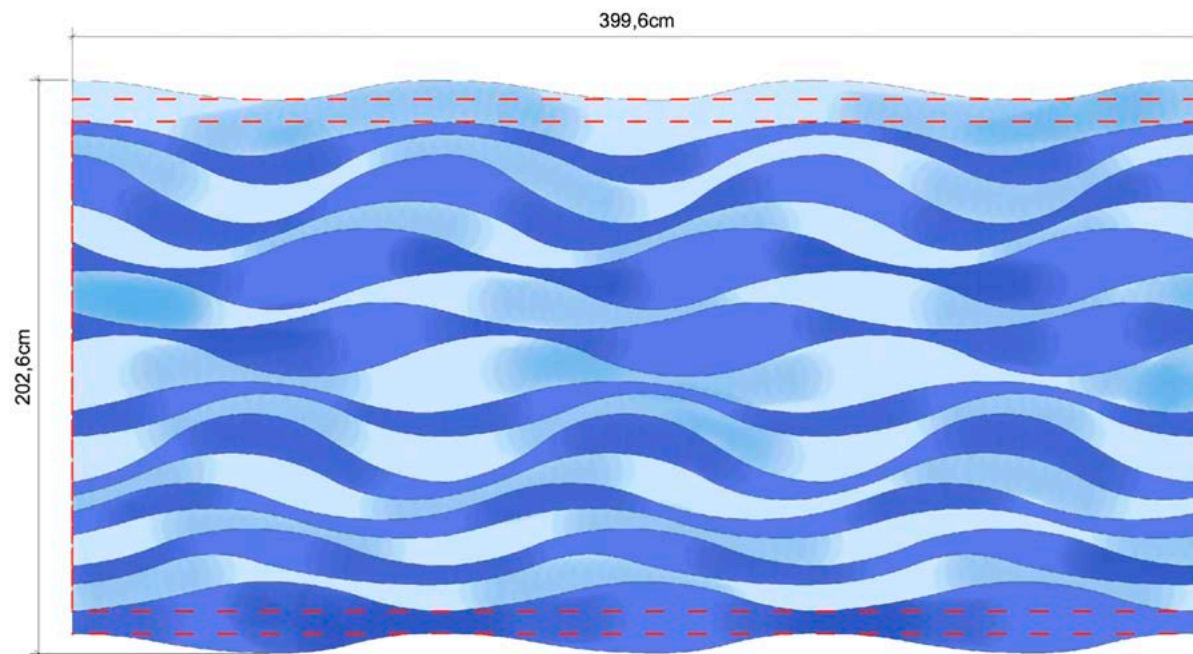
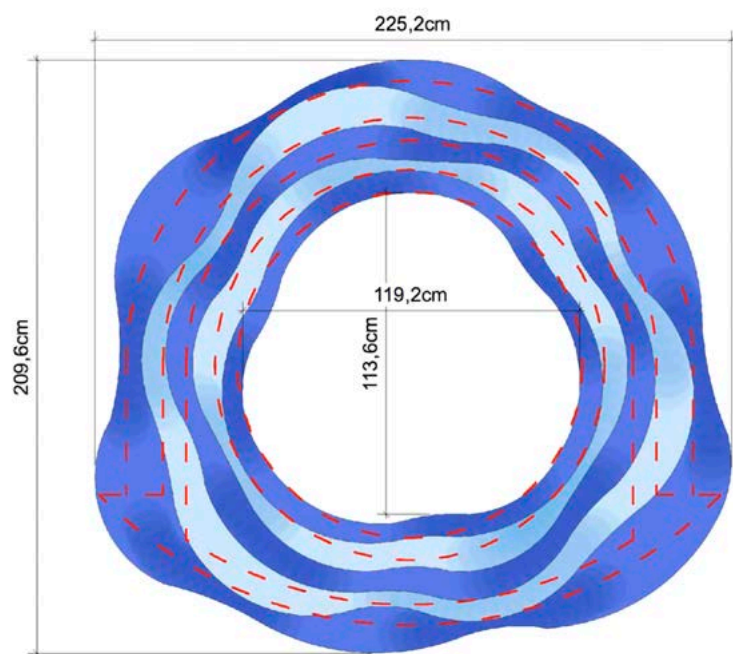


Lobby Jakuzzi



SICIS





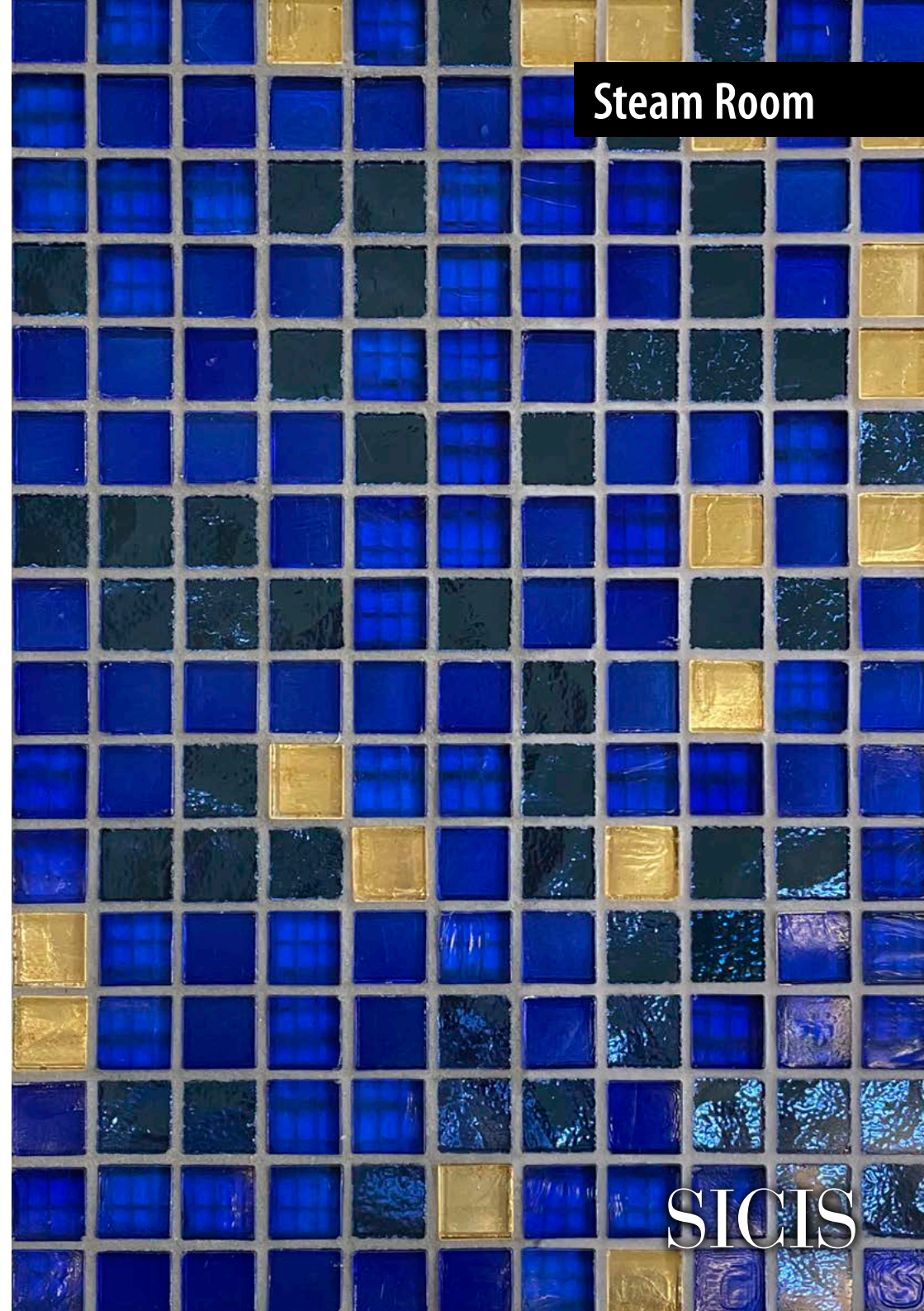




MAKING

SICIS

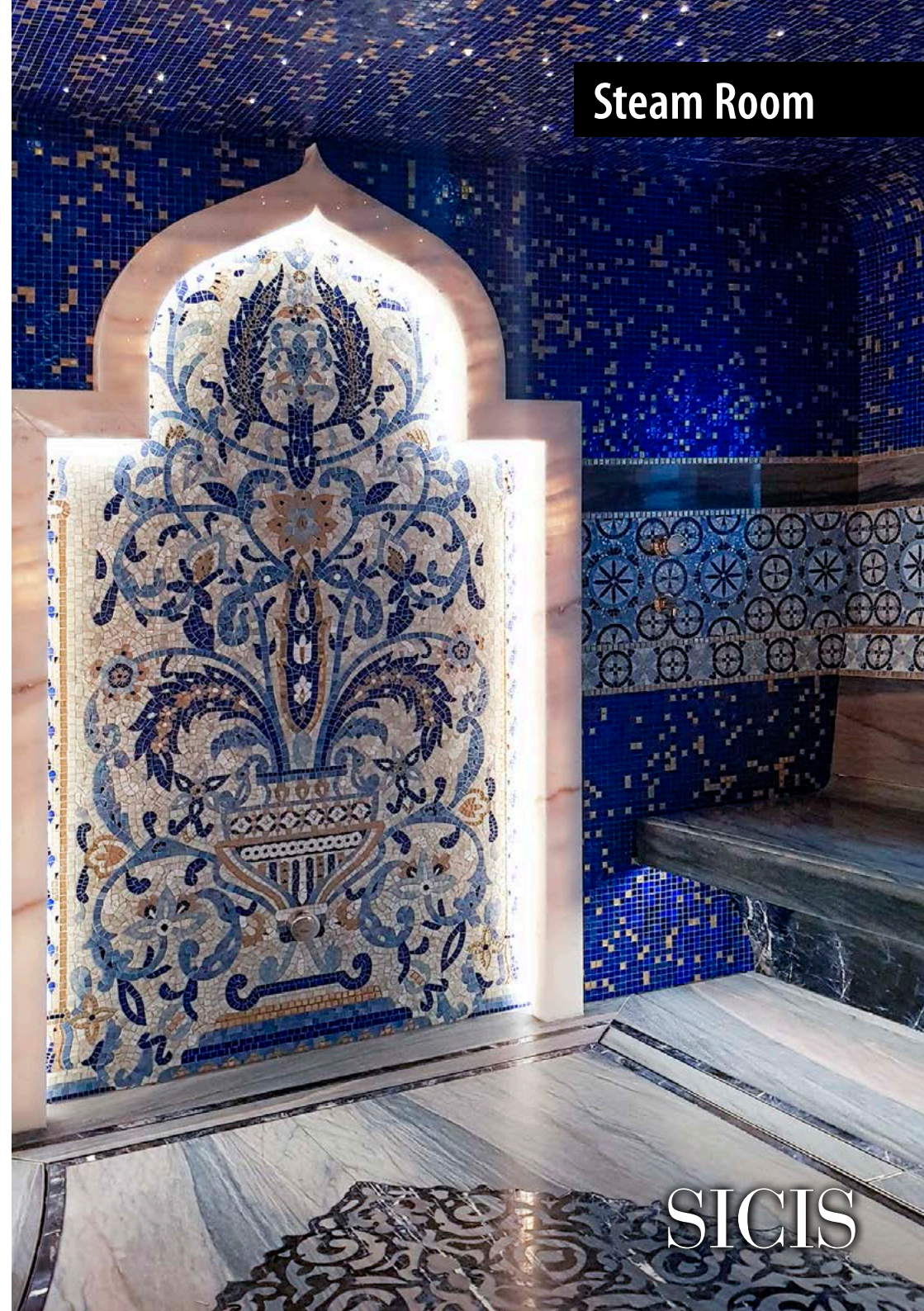
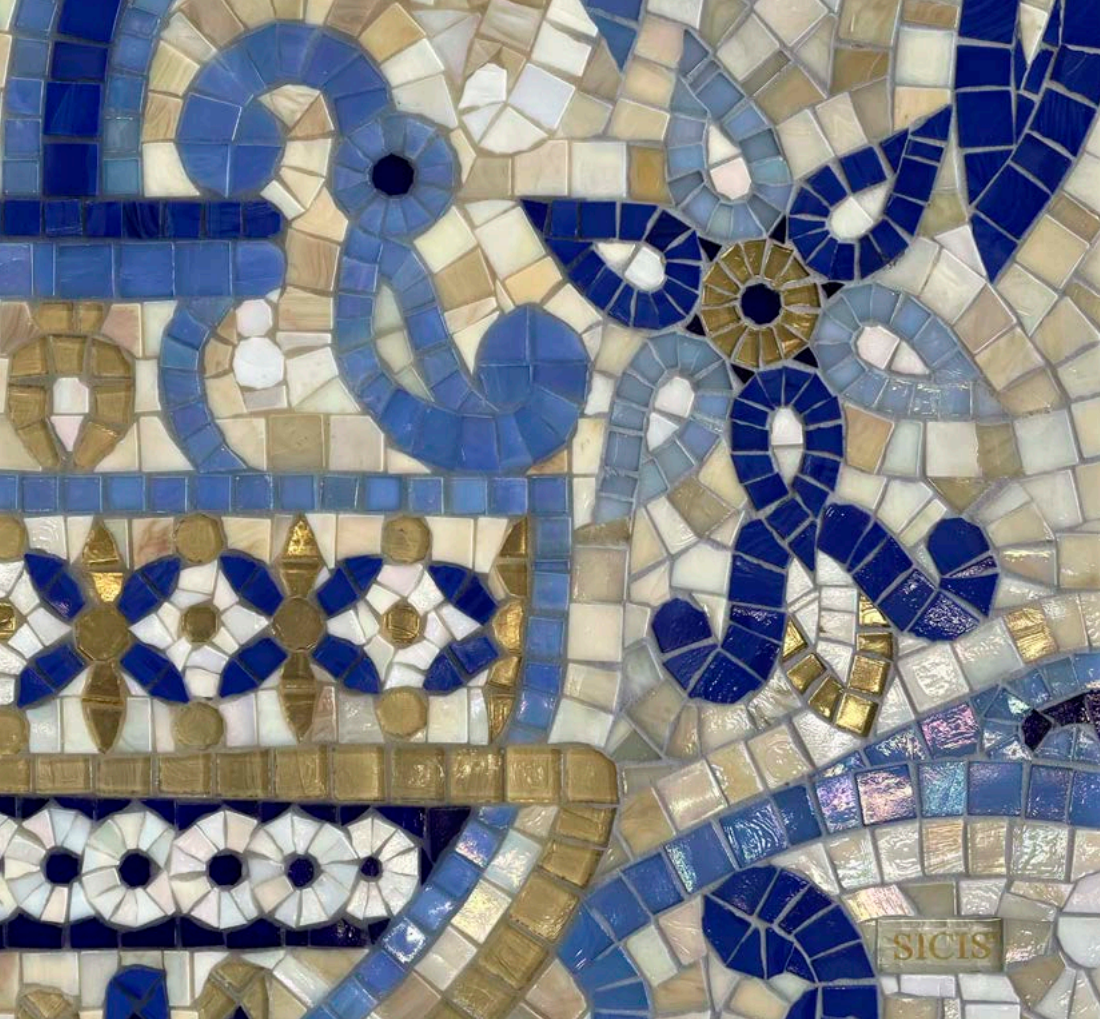




Steam Room

SICIS





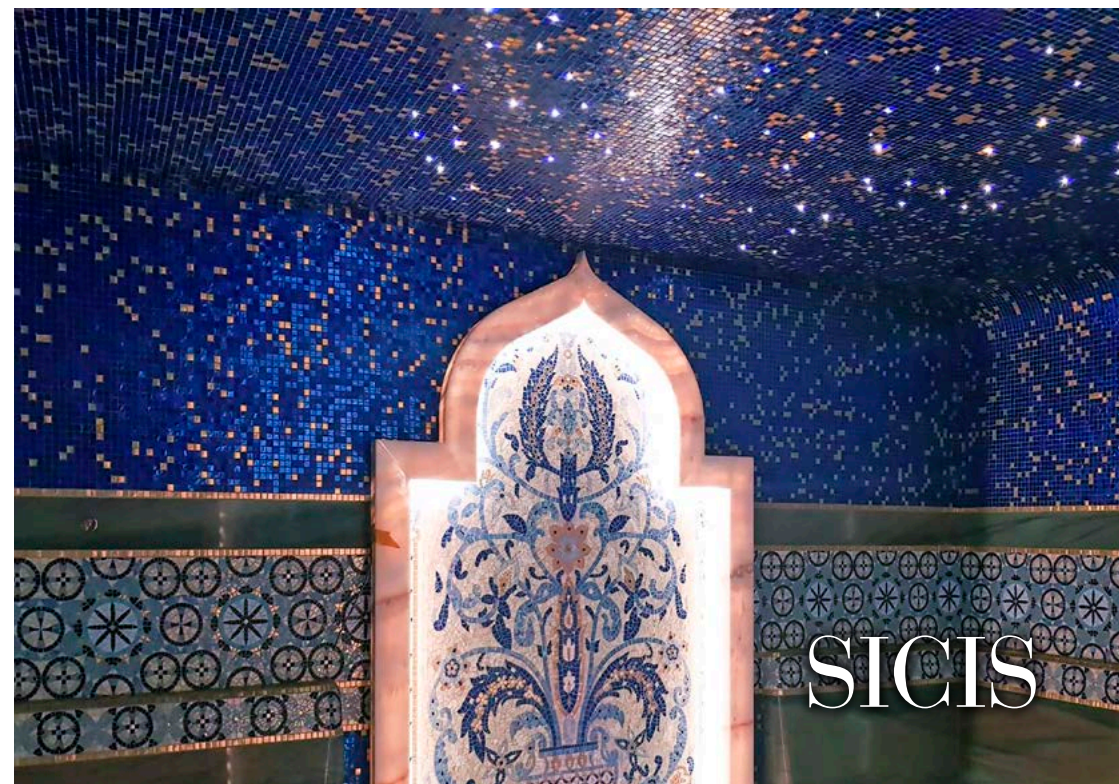
Steam Room

SICIS



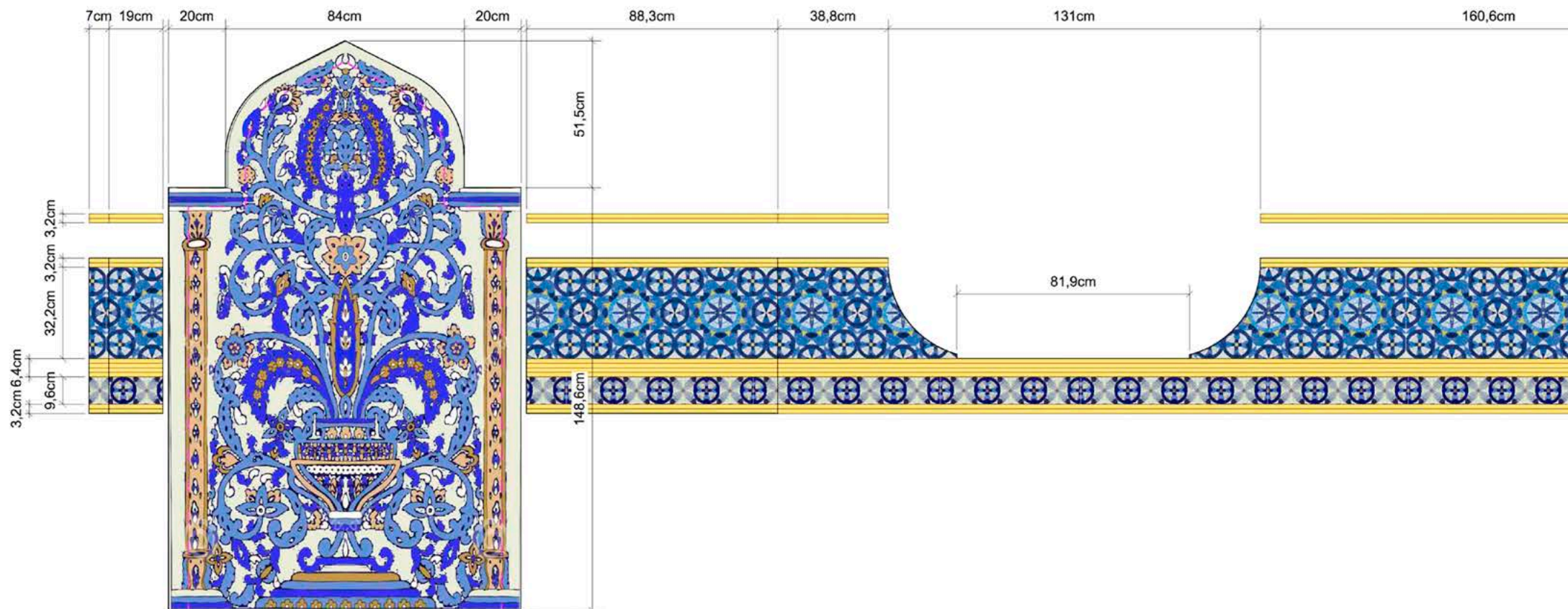


Steam Room

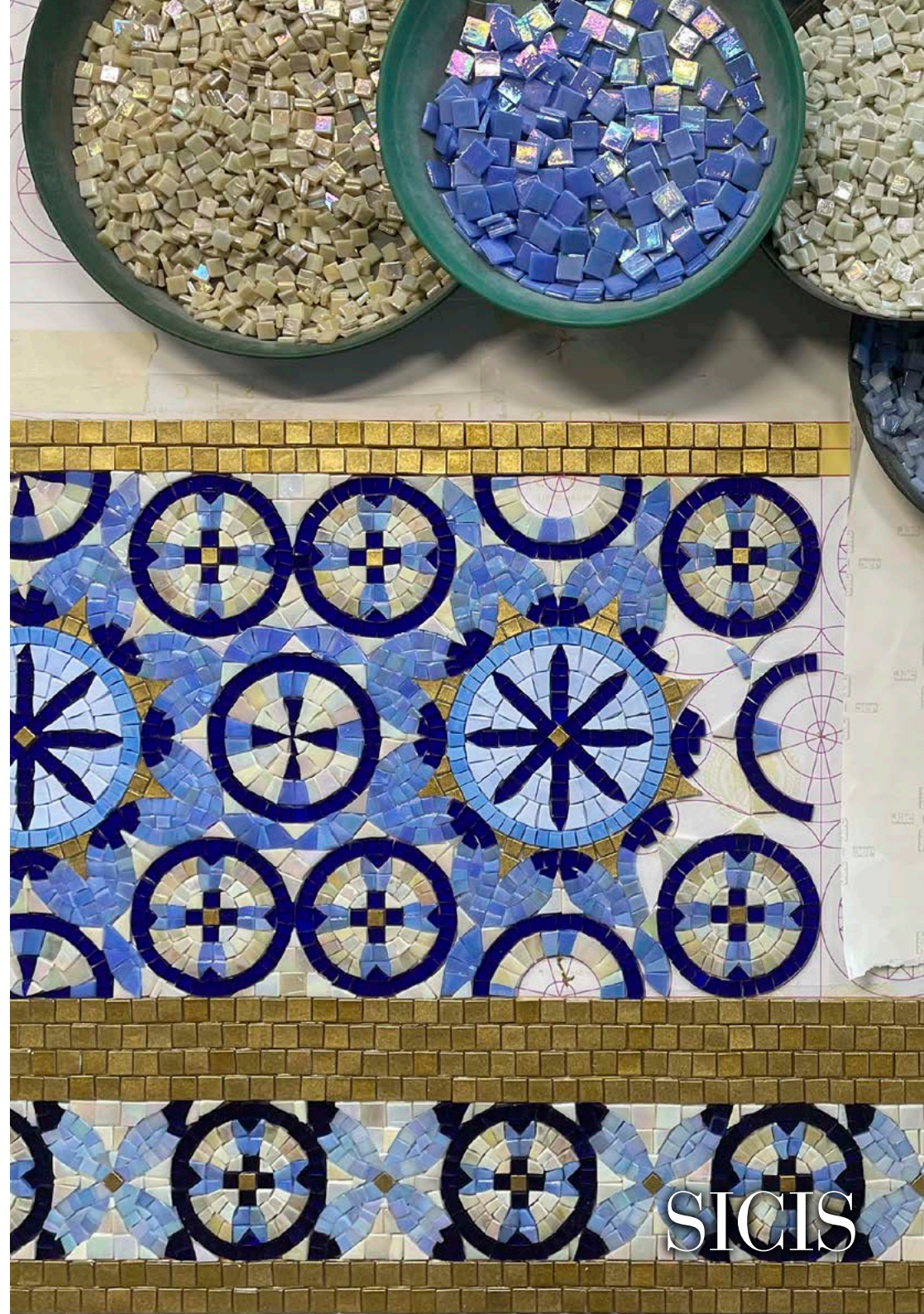


SICIS

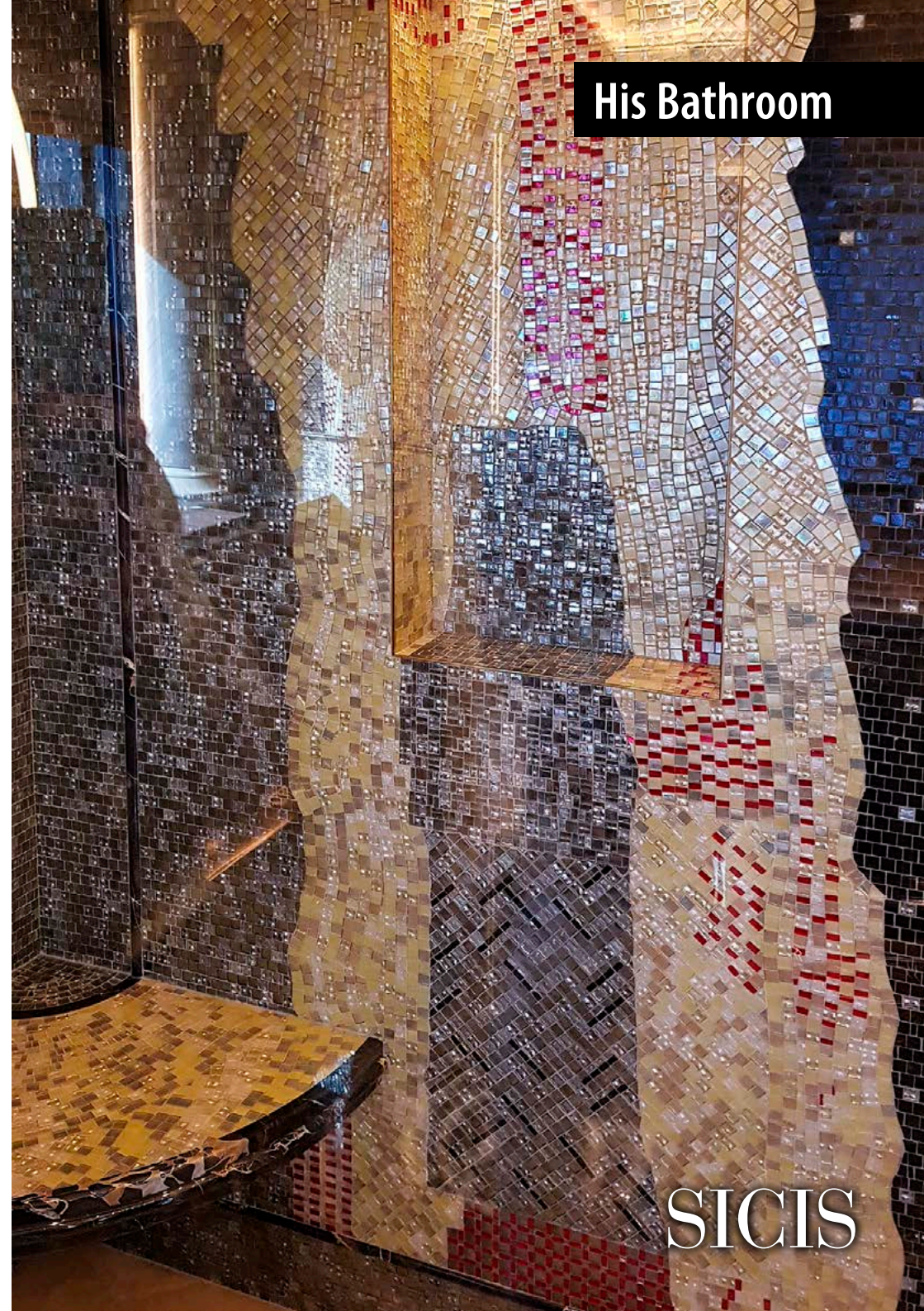








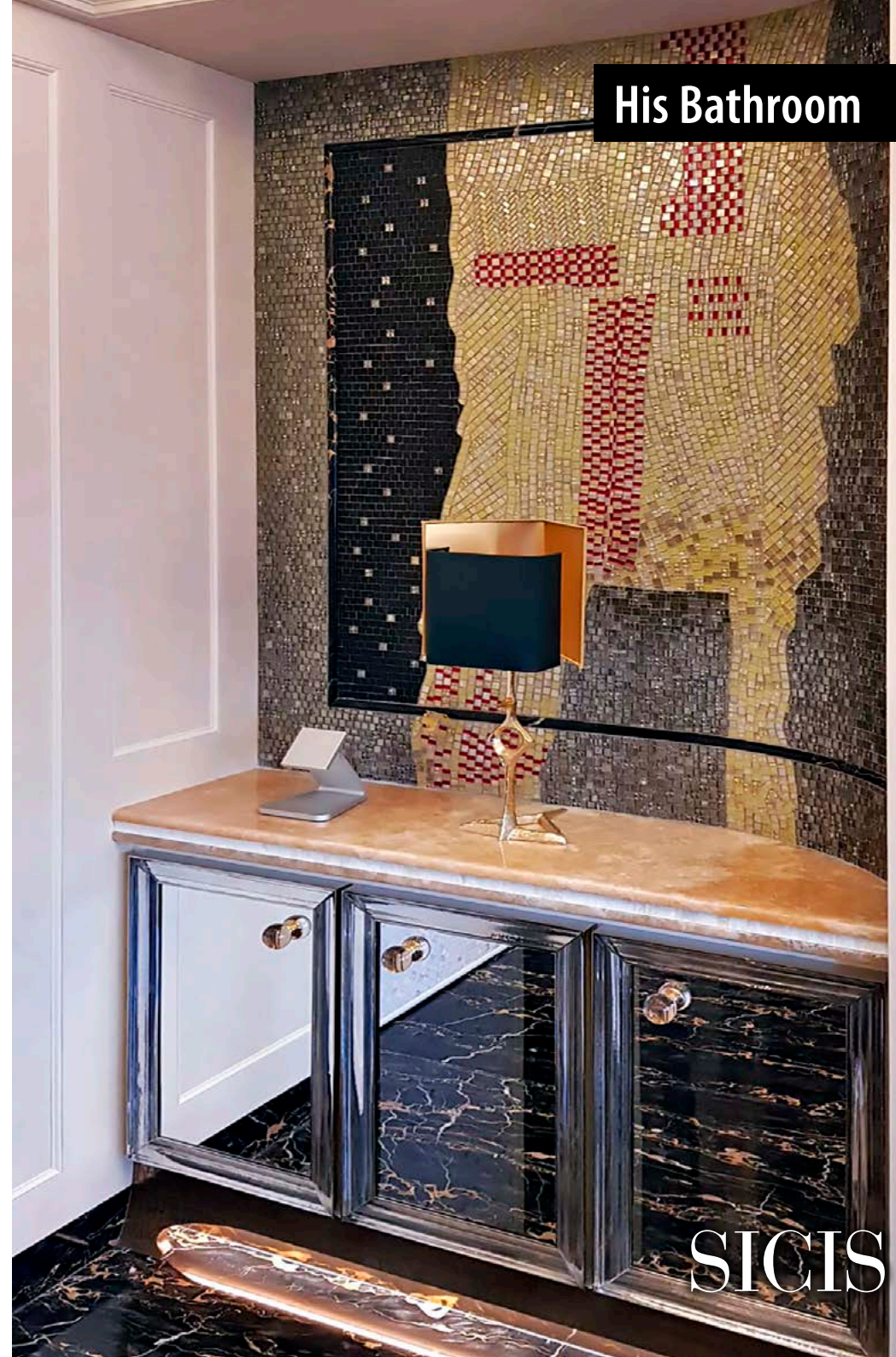
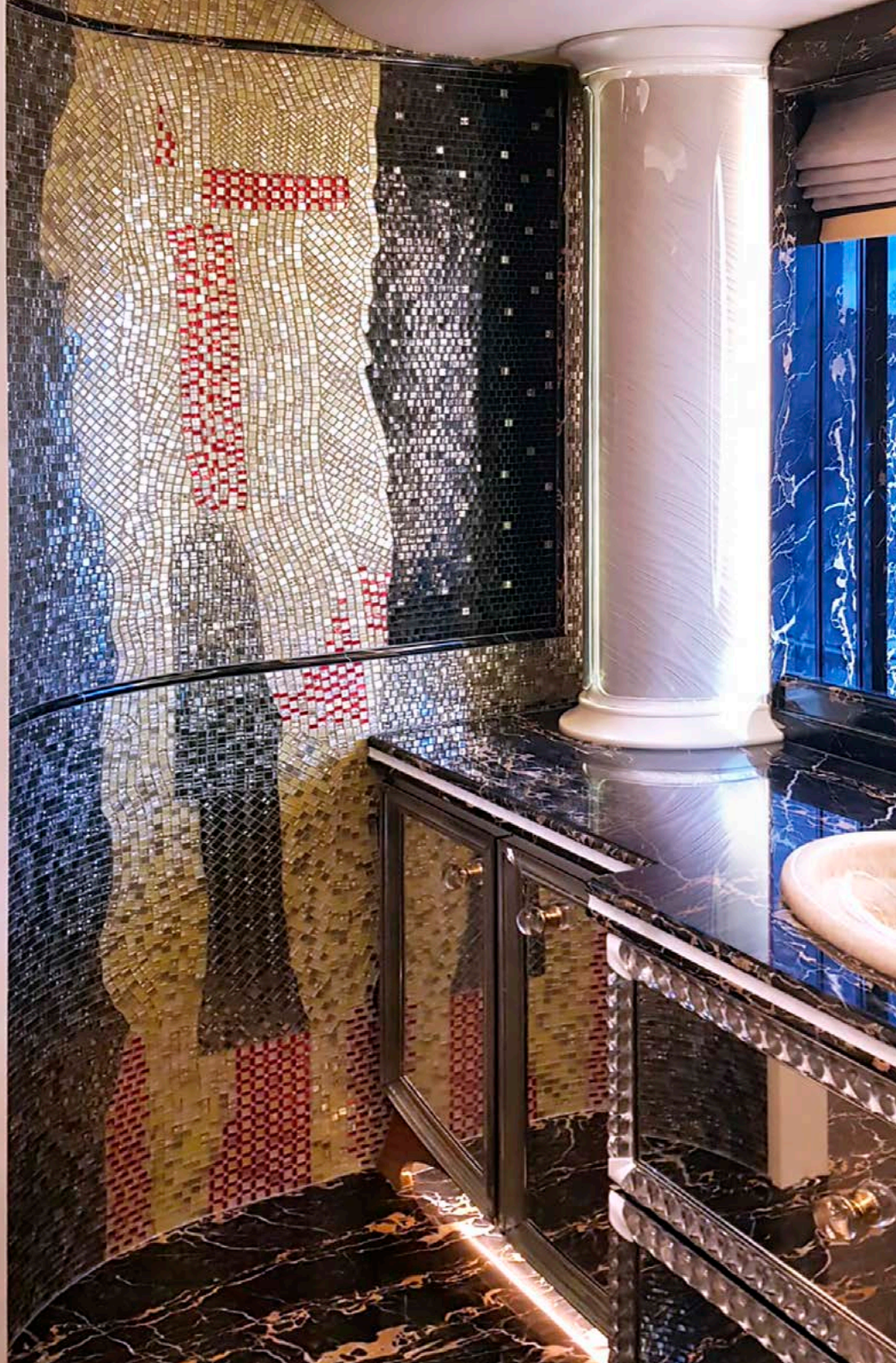




His Bathroom

SICIS



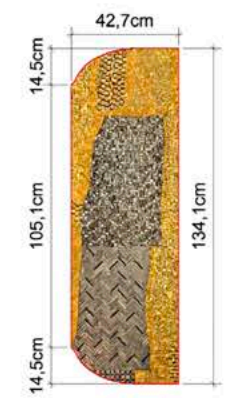
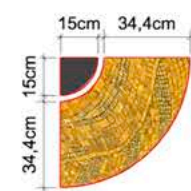
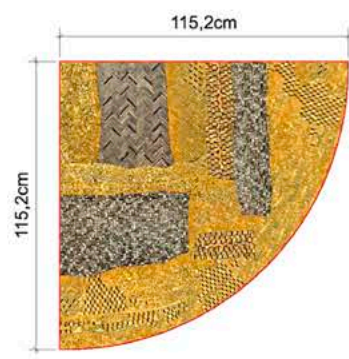
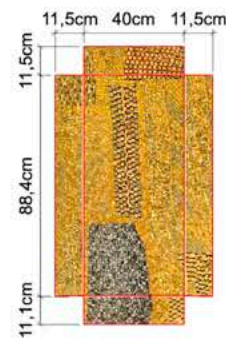
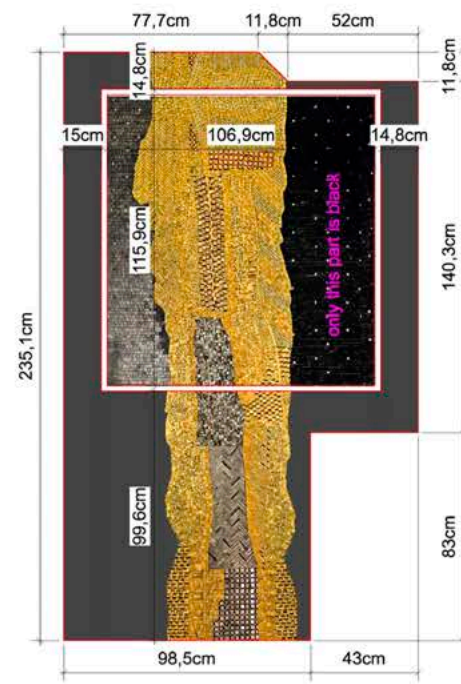
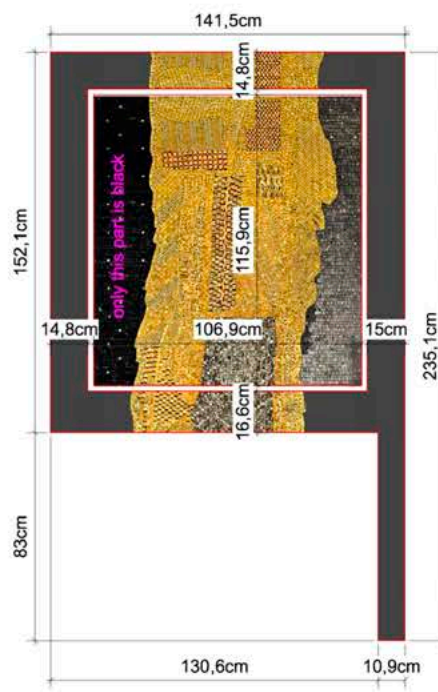
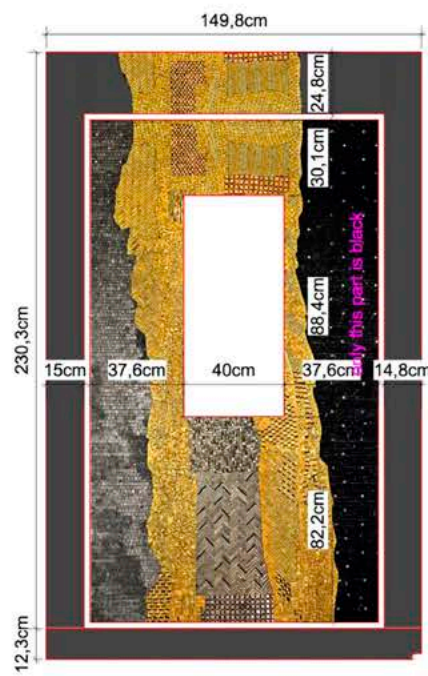
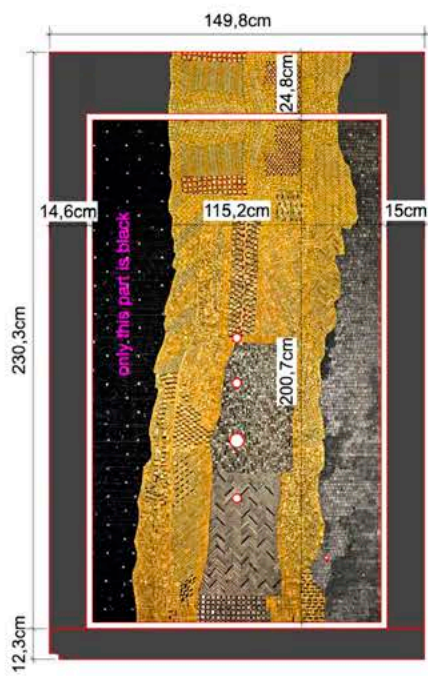


His Bathroom

SICIS



# His Bathroom







Her Bathroom



SICIS



## Her Bathroom



SICIS





Her Bathroom

SICIS



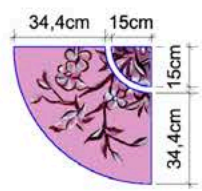
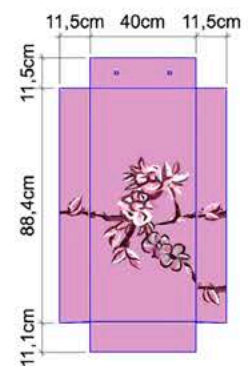
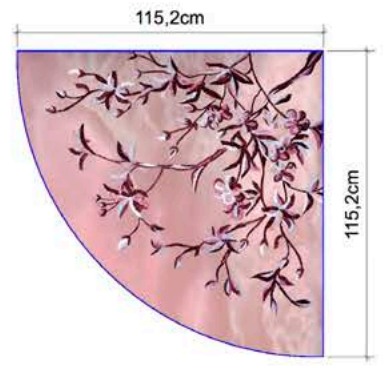
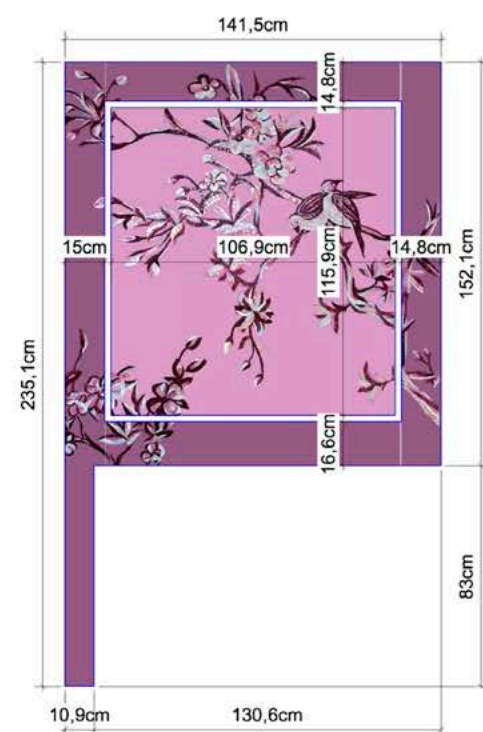
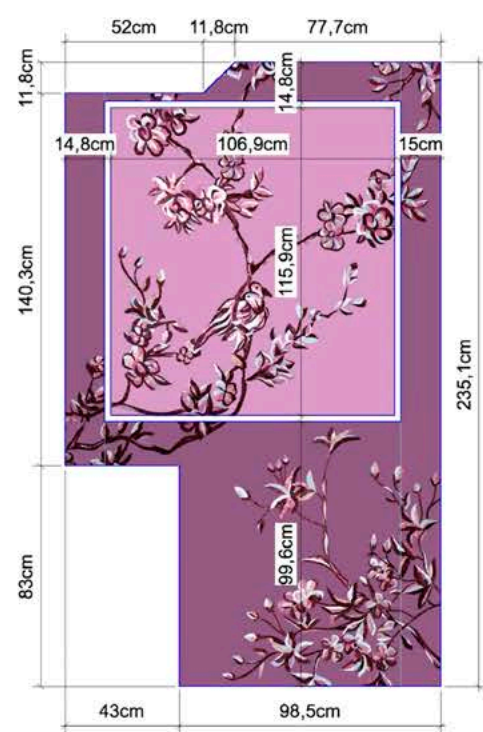
Her Bathroom



SICIS

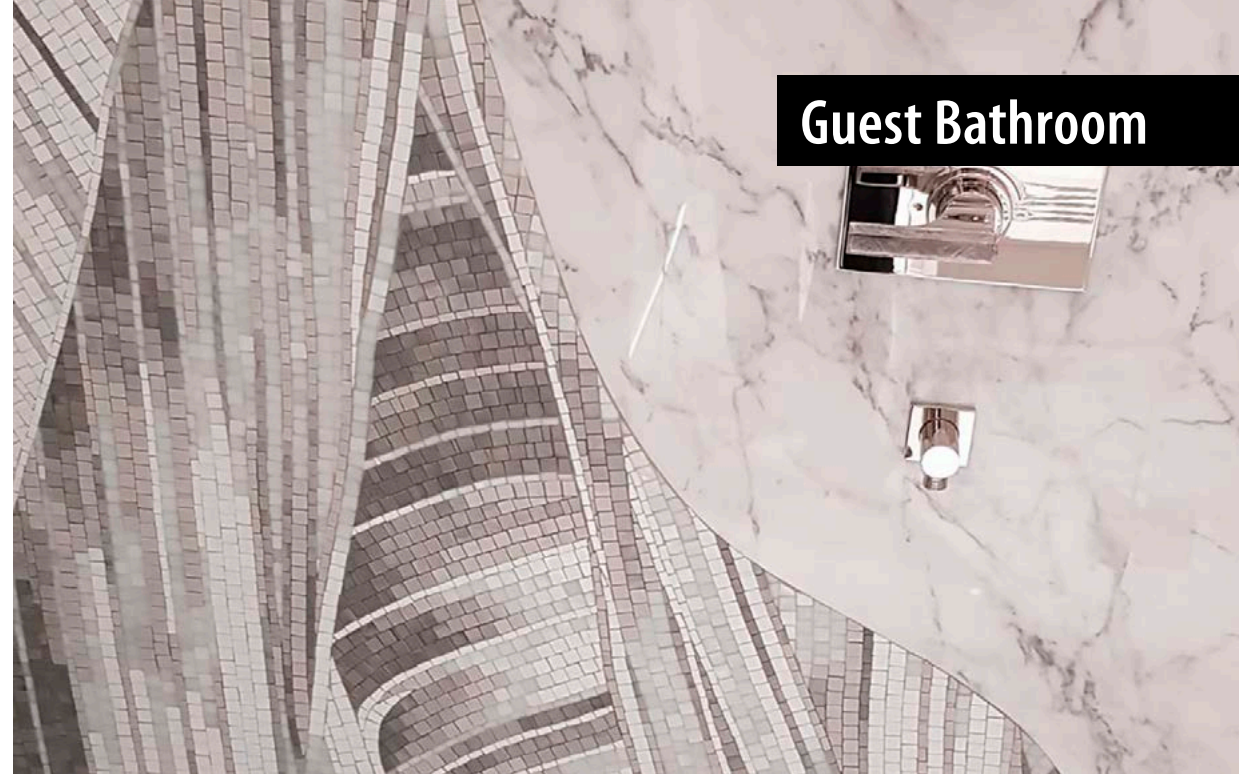


# Her Bathroom



SICIS



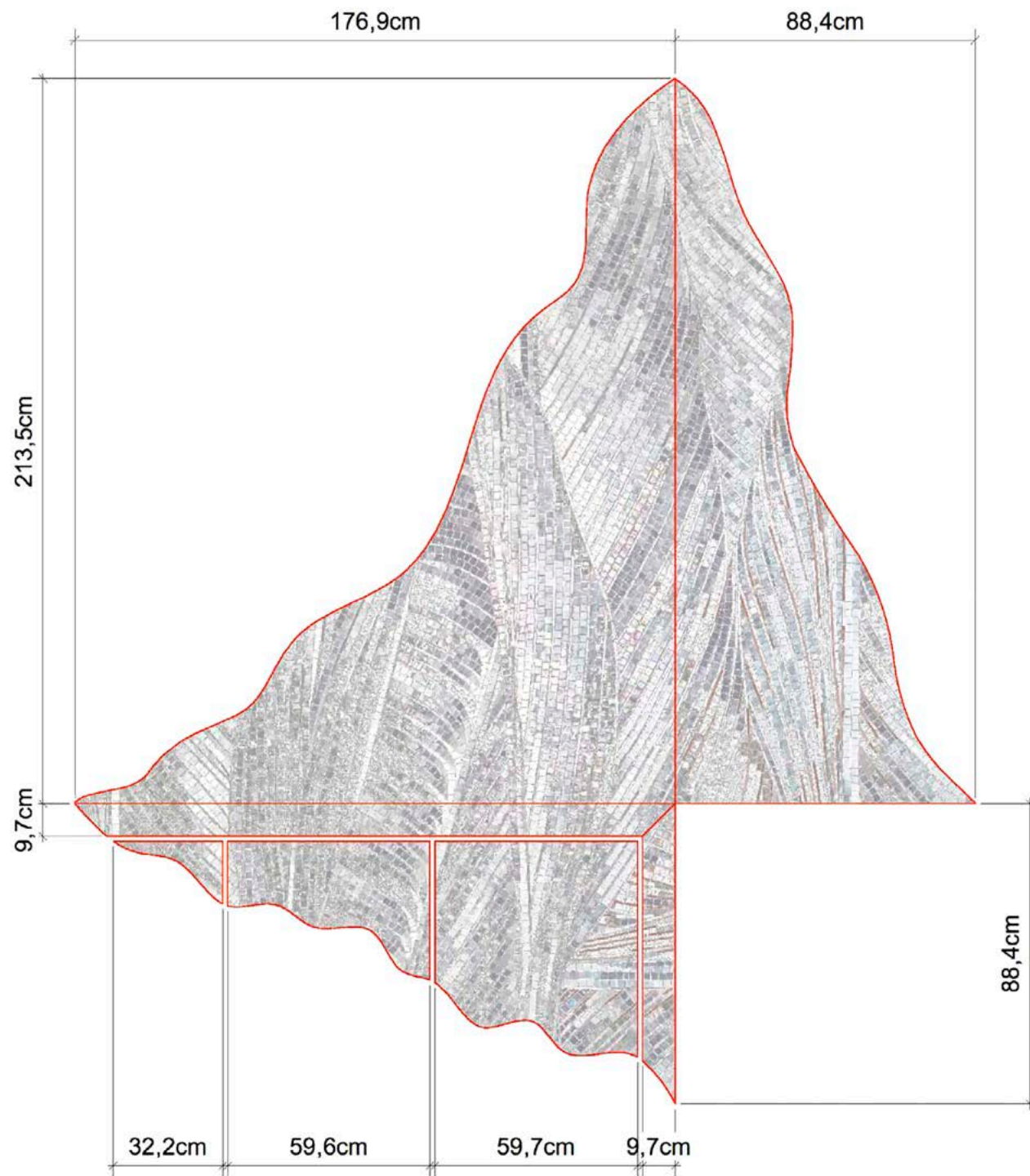


Guest Bathroom



SICIS







Bedroom



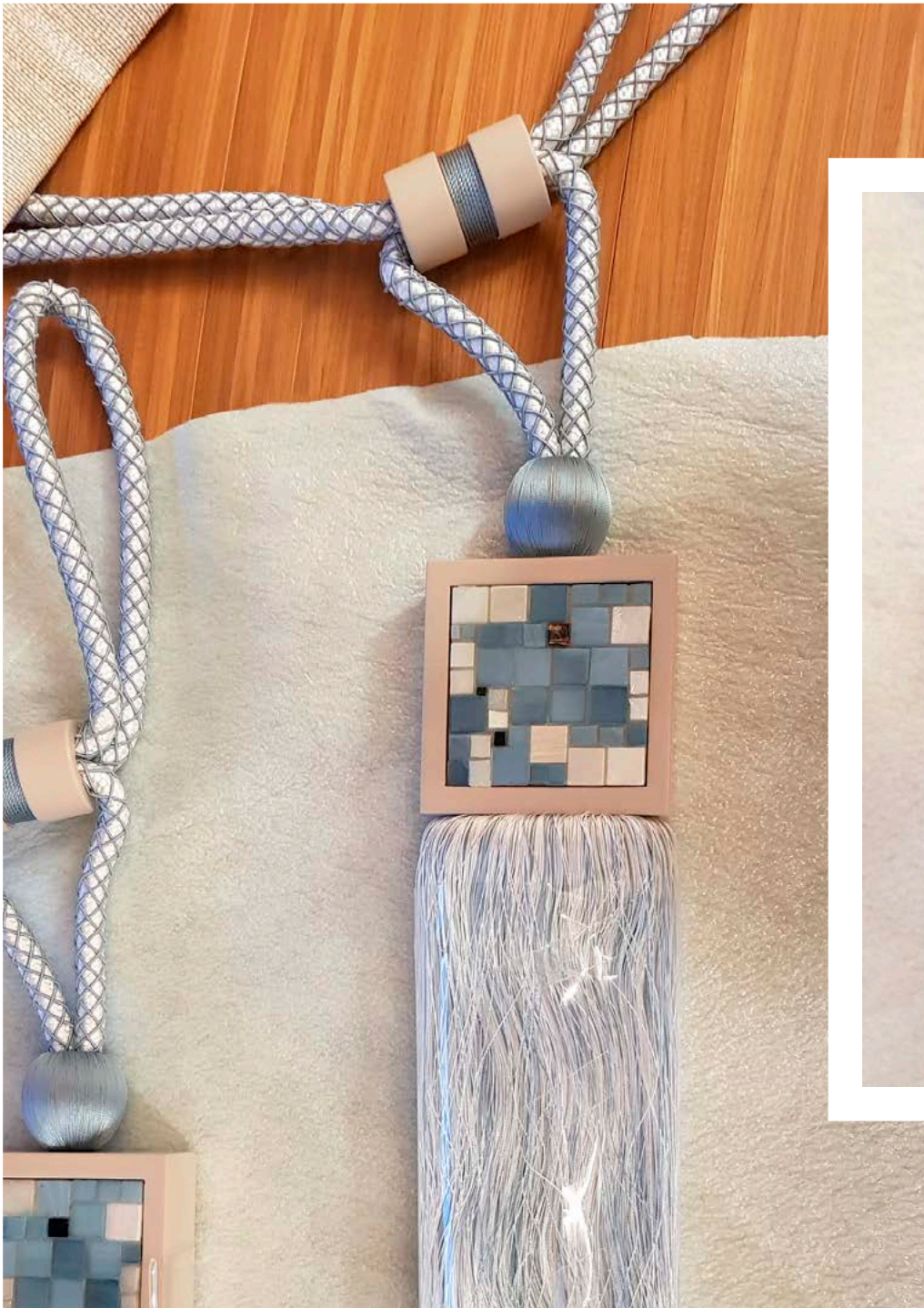
SICIS







## Tassels Curtains



SICIS





SICIS



A large, multi-deck white yacht with a dark upper section and a prominent mast is shown from a side profile on a body of water. The name 'ENZO' is visible on the side of the hull. The background is a dark, overcast sky and distant shoreline.

# SICIS

[www.sicis.com](http://www.sicis.com)

